

**CONSUMER PRICE INDEX  
MONTHLY REPORT**

**MAY 2010**



***PREPARED BY:***

**BUREAU OF STATISTICS  
DEPARTMENT OF FINANCE**

**15.06.10**

# THE CONSUMER PRICE INDEX

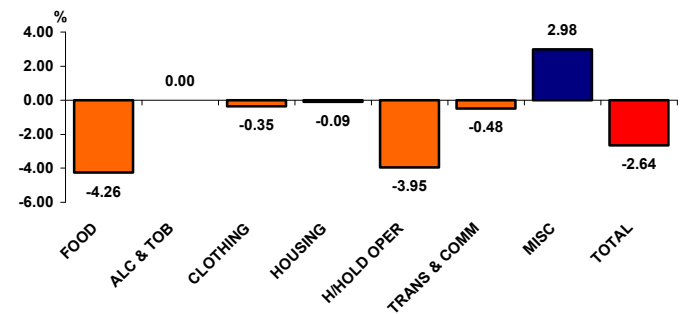
## 1. Monthly Change

The CPI for the month of May 2010 is reported at **98.32** which show that the index has decreased by **2.64** percent from the previous month of April. The Table below validates the variation of index between the two observation periods and enclosed in Appendix 1 is the Monthly CPI basket of goods depicting the index movement for each observation item.

**Table**                      **% change in Monthly Group Indices**

GROUP	APR '10 INDEX	MAY '10 INDEX	DIFFERENCE	% INCREASE DECREASE
FOOD	56.48	54.07	-2.41	-4.26
ALCOHOL & TOBACCO	17.05	17.05	0.00	0.00
CLOTHING	3.39	3.38	-0.01	-0.35
HOUSING	3.00	3.00	0.00	-0.09
HOUSEHOLD OPERATIONS	8.85	8.50	-0.35	-3.95
TRANSPORT & COMMUNICATION	7.55	7.51	-0.04	-0.48
MISCELLANEOUS	4.66	4.80	0.14	2.98
<b>TOTAL</b>	<b>100.99</b>	<b>98.32</b>	<b>-2.67</b>	<b>-2.64</b>

**Chart 1.**                      **% change for May 2010.**



Note: Discrepancy of numbers is due to calculations and rounding.

### 1.1 Monthly Observation

Following a -0.42 decline in the April 2010 monthly analysis, the Nauru CPI dropped again by **2.64** for this month of May 2010. A majority of the CPI groups experienced decreases namely Food, Household operations, Transport & Communications and Clothing.

The Food group recorded the largest decrease with **4.26** percent and the main contributor to the deceleration is the reduced price of a bag of rice with a drop of 10 percent since the previous month. Other food items also contributed small yet influential decreases such as corned beef, tinned tomatoes, cooking oil and sugar. The Food group has been declining repeatedly since December 2009 which has attributed to the declining CPI overtime mainly due to its significant importance according to its proportionate weight of 55.71 out of 100. Any fluctuations of the Food group will significantly impact the movement of the overall inflation.

Subsequently the Household operations group reported the second largest decrease with **3.95** percent. One of the most important component within this group is the electricity bill. The bureau has opted to amend the methodology of capturing the electricity rates for domestic charges since there are two applicable rates. Where monthly charges of up to 300 kWh is 10¢ per kWh and 20¢ per kWh if above the 300kWh monthly threshold. Since this rate is relevant to the volume of usage it is appropriate to derive the average between the two rates to improve the accuracy of coverage and apply it to the CPI. On that note the slight adjustment for electricity bill has slightly decreased which has contributed to the group decline and theoretically it should be virtually unchanged. Furthermore, within the Household operations group the other main contributors to the decline were washing soap powder and dishwashing liquid.

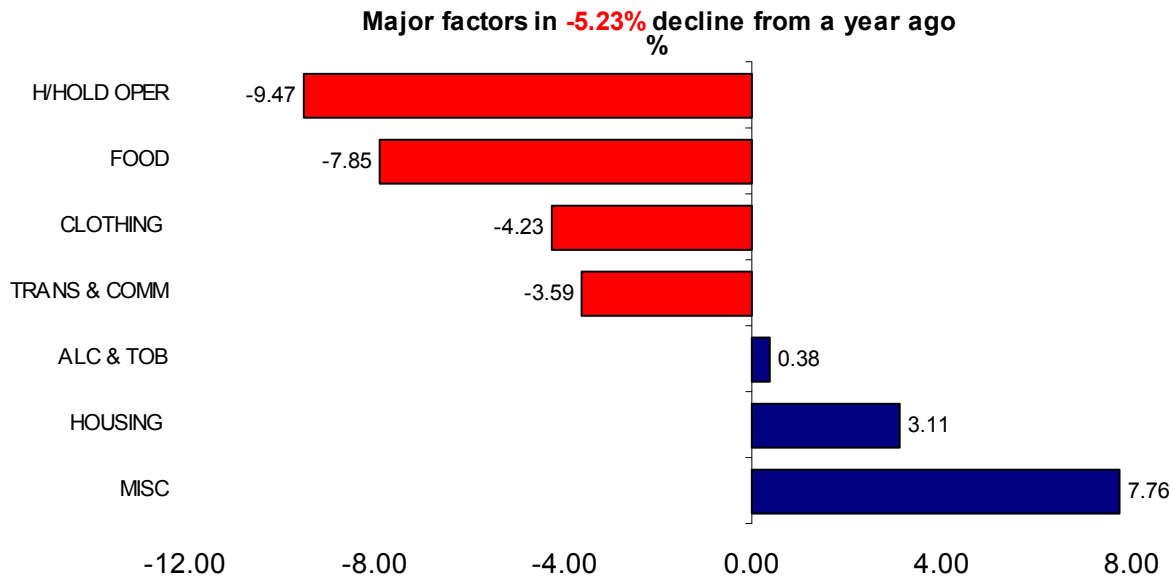
The Transport & Communications, Clothing and Housing group recorded the remaining decreases with **0.48**, **0.35** and **0.09** respectively which are virtually insignificant.

Offsetting the deflation is the sole increase of the Miscellaneous group with a growth of **2.98** percent. The rising price of bathing soap, toothpaste and dog food has contributed to the slight increase. The Alcohol & Tobacco group remained stable and unchanged

## 2. Annual Change

On an annual basis it is apparent that the annualised change has reported a significant drop of **5.23** percent as clearly illustrated in Chart 2 below. A majority of the CPI groups such as--Household operation, Food, Clothing and Transport & Communication --have all recorded decreases.

**Chart 2. Annualised % change since May 2009**



### 2.1 Annual Observation<sup>1</sup>

In the annualised change there is a significant decrease for the goods and services with four of the seven groups reporting declines.

Leading the annual deflation is the Household operations group with a significant decrease of **9.47** percent as a result of declines for electricity bills, freezer, refrigerator, toilet paper and batteries. This is followed by the Food group with **7.85** percent and is mainly affected by drops of rice, bread, corned beef, and a kilo of tuna/bonito, tinned mackerel, milk powder and sugar. Similarly, the Clothing group recorded a **4.23** percent decline and it's mostly influenced by decreases from infant nappies and ladies mumu. Last of all, Transport & Communications group reported the smallest decrease compared to a year ago with **3.59** percent and is mainly attributed to the reduced prices for petrol and diesel.

To offset the deflation, three main groups recorded increases namely Miscellaneous, Housing and Alcohol & Tobacco with **7.76**, **3.11** and **0.38** respectively.

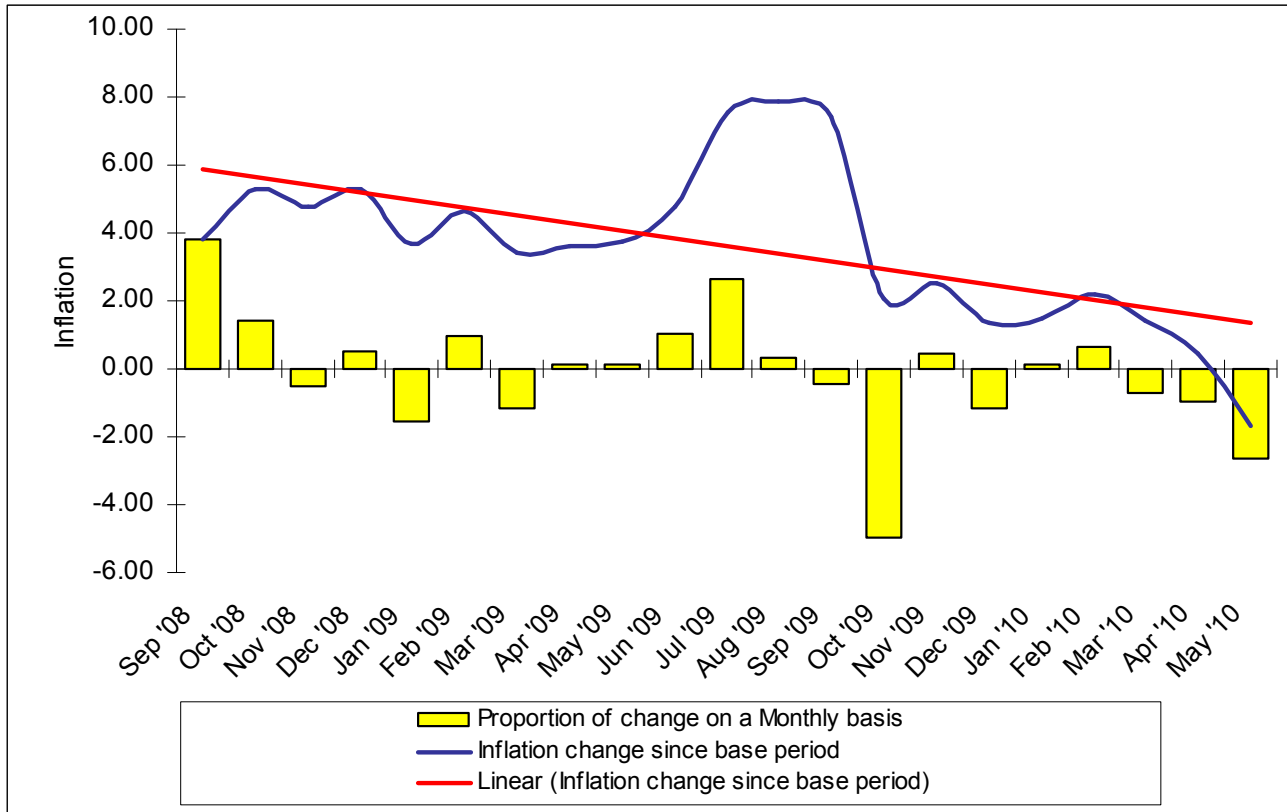
Within the Miscellaneous group the fluctuations is traced to increased prices for blank CDR, bar of soap, toothpaste and tinned dog food. Likewise, the Housing group is partly influenced by increased prices for paint and timber. Lastly, the small increase for the price of cigarettes as solely contributed to the slight growth of the Alcohol & Tobacco group.

<sup>1</sup> Detailed variations of annual CPI refer to basket of goods Appendix 2.

### 3. All Groups CPI Series

The All Groups index for May 2010 has decreased **2.64** percent based on the monthly fluctuations and similarly to **1.68** percentage change since the base prices.

**Chart 3. All Groups CPI Monthly variables and Inflation trend since base period**



#### 3.1 Historical Movement

The All Groups Index<sup>2</sup> illustrated in Chart 3 shows the two CPI's historical trends since the base period August 2008. The bar graph represents the monthly fluctuations and the line graph illustrates changes since base period.

Overtime the All Groups index (monthly) has been fluctuating randomly with initial growth commencing in June and July of 2009 primarily as a result for the increase of the Food group which in turn was mainly influenced by the increasing rice index. This growth was then compensated with the deceleration of the All Groups index in the latter period in October 2009 when the combination of Food and Household operations group recorded significant declines. Subsequent in March 2010 until the current period those consistent declines of **0.73**, **0.95** and **2.64** respectively have been attributed to the deflated Food and Household operations group.

Likewise, the trend is reflecting when the All Groups index is compared to change since base period. The current change since base period is a reduction of **1.68** percent articulating for the first time during the monitoring of the CPI that the current All Groups index is less than when the CPI was rebased 22 months ago (August 2008).

<sup>2</sup> The CPI's basket of goods consist of seven major groups--Food, Alcohol & Tobacco, Clothing, Housing, Household operations, Transport & Communications and Miscellaneous--which make up the All Groups index.

#### **4. Conclusion**

It is evident that significant decelerations have been quite high in terms of the monthly, annual and historical series inflation. As previously mentioned the deceleration mainly caused by declines of Food and household operations group which in turn is mainly affected by influential goods such as rice for the Food group and electricity bills for the household operations group.

Apparently the root cause for the rapid deceleration is caused by seasonal fluctuations with no policy interventions by policy makers.

				01 AUG '08	APR '10		MAY '10	
REF-NO	ITEM NAME	DESCRIPTION	WEIGHT	BASE PRICE	PRICE	INDEX	PRICE	INDEX
	<u>RICE &amp; OTHER CEREALS</u>							
1010	Rice	Imported rice/sunwhite/bag/25kg	15.48	41.00	46.00	17.37	41.40	15.63
1020	Bread (sliced loaf)	Bread//white/local/sliced loaf	3.65	1.75	1.93	4.03	1.93	4.03
1030	Noodles	Noodles/sachet/85g	1.68	0.53	0.63	2.00	0.62	1.97
1040	Other bread and Biscuits	Dry biscuits/brand/250g	0.54	2.10	2.72	0.70	2.70	0.69
1050	Self raising	Imported Flour/self raising/1kg	0.39	2.50	3.06	0.48	3.02	0.47
	<u>MEAT</u>							
1060	Chicken	Imported Chicken/cuts/2kg	7.99	9.18	7.98	6.95	7.98	6.95
1070	Canned Meat	Tinned beef/corned beef/imperial/326g	3.63	4.53	4.67	3.74	4.33	3.47
1080	Canned Meat	Tinned meat/luncheon/397g	1.69	2.43	1.73	1.20	1.73	1.20
1090	Sausages	Sausages/1pack/pork/1kg	1.07	7.33	4.05	0.59	4.05	0.59
	<u>SEAFOOD</u>							
1100	Fish	Tuna/Skipjack(bonita)/1 kg	2.50	6.00	4.00	1.67	4.00	1.67
1110	Canned Fish	Imported tinned mackerel/brand/425g	0.92	2.55	2.73	0.98	2.88	1.04
1120	Reef fish	Reef fish/1 kg	0.75	8.00	8.00	0.75	8.00	0.75
1130	Canned Fish	Tinned sardines/sardines/425g	0.50	2.35	3.00	0.64	3.00	0.64
	<u>FOOD, FRUIT &amp; VEGETABLES</u>							
1140	Canned Tomatoes	Tinned tomatoes/brand/400g	0.71	1.97	2.06	0.74	1.83	0.66
1150	Onions and Chives	Onions/sea feight/1kg	0.34	3.95	5.82	0.50	5.78	0.50
1160	Potatoes	Potatoes/sea freight/1kg	0.14	3.90	4.55	0.16	4.25	0.15
	<u>DAIRY</u>							
1170	Butter	Imported butter/brand/250g	1.43	2.65	2.73	1.47	2.92	1.57
1180	Milk powder	Milk powder/brand/1kg	0.99	12.87	11.62	0.89	11.40	0.88
1190	Cooking Oil	Cooking oil/brand/750ml	0.52	4.57	5.35	0.61	5.22	0.59
1200	Fresh milk	Fresh milk/full cream/1litre	0.42	2.63	2.80	0.45	2.83	0.45
1210	Eggs	Imported Eggs/dozen/600g	0.29	5.47	5.88	0.31	6.00	0.32

				01 AUG '08	APR '10		MAY '10	
REF-NO	ITEM NAME	DESCRIPTION	WEIGHT	BASE PRICE	PRICE	INDEX	PRICE	INDEX
	<u>OTHER FOODS</u>							
1220	Soft drink	Soft drinks/brand/1can/375ml	0.96	1.03	1.12	1.04	1.17	1.09
1230	Sugar	Imported sugar/white/brand/2kg	4.60	4.10	4.53	5.08	4.15	4.66
1240	Soya sauce	Soya sauce/light/500ml	0.58	2.90	2.92	0.58	2.92	0.58
1250	Tea	Imported tea/100 bags/180g	0.49	4.60	3.80	0.40	3.80	0.40
1260	Coffee	Imported coffee/brand/100g	0.45	7.42	4.76	0.29	4.68	0.28
1270	Baby food	Baby food/heinz/vanilla custard/110g	0.44	1.27	1.48	0.51	1.48	0.51
	<u>TAKE AWAY</u>							
1280	Plate of food/Take away	Plate of food/take away	2.20	3.77	3.38	1.97	3.38	1.97
1290	Dinner out	Dinner for two/Formal/Reynaldo	0.36	22.50	22.50	0.36	22.50	0.36
	<b>Sub total :</b>	<b>(Food group)</b>	<b>55.71</b>			<b>56.48</b>		<b>54.07</b>
	<u>ALCOHOL &amp; TOBACCO</u>							
1410	Beer	Beer/brand/1can/375ml	4.27	2.00	1.65	3.52	1.65	3.52
1420	Cigarettes	Cigarettes/Alpine brand/1packet/25 sticks	12.20	5.50	6.10	13.53	6.10	13.53
	<b>Sub total :</b>	<b>(Alcohol &amp; Tobacco group)</b>	<b>16.47</b>			<b>17.05</b>		<b>17.05</b>
	<u>CLOTHING</u>							
1510	Nappies	Nappies/plastic/brand/size medium/20 per pack	0.81	17.04	13.70	0.65	13.45	0.64
1520	Mumu	Casual/imported formal dress/mumu size large	0.85	15.60	30.00	1.63	30.00	1.63
1530	T/Shirt	Imported T-shirt/duel sex/size large	0.37	10.65	12.50	0.43	12.50	0.43
	<u>FOOTWEAR</u>							
1540	Footwear	Shoes/womens slip-ons/size 9	0.14	3.00	14.35	0.67	14.35	0.67
	<b>Sub total :</b>	<b>(Clothing group)</b>	<b>2.17</b>			<b>3.39</b>		<b>3.38</b>
	<u>RENT</u>							
1610	Rent for dwelling per month	Rent unit/MQ/Location	0.23	75.00	75.00	0.23	75.00	0.23

				01 AUG '08	APR '10		MAY '10	
REF-NO	ITEM NAME	DESCRIPTION	WEIGHT	BASE PRICE	PRICE	INDEX	PRICE	INDEX
	<u>MAINTENANCE</u>							
1620	Ceramic tiles	Tiles/plastic tiles/size square cm/1case()	1.54	68.80	46.50	1.04	46.50	1.04
1630	Cement	Cement/bag/40 kg	0.76	20.60	23.00	0.85	23.00	0.85
1640	Paint	Paint/brand/enamel/4litre	0.51	62.63	65.00	0.53	64.67	0.53
1650	Timber	Timber/treated pine/4x2/4.8metres	0.44	47.00	38.00	0.36	38.00	0.36
	<b>Sub total :</b>	<b>(Housing group)</b>	<b>3.48</b>			<b>3.00</b>		<b>3.00</b>
	<u>BILLS</u>							
1710	Electricity bill	Electricity bill/kilowatt per hour	1.60	0.30	0.20	1.07	0.15	0.80
1720	Water bill	Water Bill/per 10 litre	0.35	0.03	0.03	0.35	0.03	0.35
	<u>APPLIANCES</u>							
1730	Freezer	Freezer	1.12	750.00	1016.25	1.52	1016.25	1.52
1740	Refridgerator	Refridgerator	0.73	1635.00	1527.50	0.68	1527.50	0.68
1750	Television	Television/brand/15 inch	0.71	369.50	448.67	0.86	448.67	0.86
1760	Washing machine	Washing machine/brand/5kg capacity	0.68	1195.00	993.17	0.57	993.17	0.57
	<u>FURNITURE</u>							
1770	Light fitting	Light fitting/brand/60watt globe	0.28	2.50	1.94	0.22	1.94	0.22
1780	Beds	Beds/single/foam-sponge	0.25	400.00	425.00	0.27	425.00	0.27
	<u>SUPPLIES</u>							
1790	Toilet paper	Toilet Paper/brand/1000 sheets	1.23	2.15	2.33	1.33	2.33	1.33
1800	Washing soap powder	Washing soap powder/brand/500g	0.71	5.60	4.93	0.63	4.90	0.62
1810	Mosquito coil	Mosquito coil/1packet/10coils/120g	0.69	1.14	1.18	0.72	1.18	0.72
1820	Dishwashing liquid	Dishwashing liquid/brand/500ml	0.30	3.48	3.17	0.27	2.33	0.20
1830	Batteries	Batteries/brand/1pack/2 x size D	0.17	2.52	5.53	0.37	5.43	0.37
	<b>Sub total :</b>	<b>(Household Operations group)</b>	<b>8.82</b>			<b>8.85</b>		<b>8.50</b>



## Appendix 1

Consumer Price Index - Survey period ending May 31<sup>st</sup>, 2010

15/06/10

REF-NO	ITEM NAME	DESCRIPTION	WEIGHT	01 AUG '08 BASE PRICE	APR '10 PRICE	INDEX	MAY '10 PRICE	INDEX
	<u>TRANSPORT &amp; COMMUNICATIONS</u>							
1910	Petrol	Petrol/1 litre	5.34	2.00	1.54	4.11	1.54	4.10
1920	Airfair	Return ticket/Australia	2.88	1468.00	1258.00	2.47	1258.00	2.47
1930	Oil	Oil/brand/multi-grade/1litre	0.48	14.37	9.22	0.31	8.56	0.29
1940	Deisel	Diesel/1 litre	0.43	2.05	1.54	0.32	1.54	0.32
1950	Departure tax	Departure Tax	0.22	50.00	50.00	0.22	50.00	0.22
1960	Other communication	International call card to Australia/rate per hour	0.12	6.00	6.00	0.12	6.00	0.12
	<b>Sub total :</b>	<b>(Transport &amp; Communication group)</b>	<b>9.47</b>			<b>7.55</b>		<b>7.51</b>
	<u>HEALTH</u>							
2010	Hospital charges	Hospital charges/Minor surgery	0.35	20.00	20.00	0.35	20.00	0.35
2020	Doctors/dentists fees	Doctors/dentist/Consultation fees	0.33	10.00	10.00	0.33	10.00	0.33
	<u>EDUCATION</u>							
2030	School clothing	School clothing/Shirts/shorts	0.34	10.00	10.00	0.34	10.00	0.34
2040	Books & schooling supplies	Exercise Books/brand/64pages	0.16	0.85	1.00	0.19	1.00	0.19
	<u>RECREATION</u>							
2050	Records, Cassettes,CD's	Blank CDR/brand/single/700mb	0.64	1.25	1.47	0.75	1.47	0.75
2060	Fishing equipment and supplies	Fishing hook/brand/Nickel coated/size 7/0	0.34	0.20	0.50	0.85	0.50	0.85
2070	DVD hire	DVD hire	0.16	2.00	2.00	0.16	2.00	0.16
	<u>PERSONAL PRODUCTS</u>							
2080	Bathing soap (liquid/bar )	Soap/bar/brand/100g	0.60	0.89	1.02	0.69	1.08	0.73
2090	Toothpaste	Toothpaste/brand/90g	0.17	2.63	2.40	0.16	2.50	0.16
2100	Deodorant, body spray	Deodorant/brand/body spray/100ml	0.13	3.90	5.15	0.17	4.90	0.16
	<u>MISCELANEOUS</u>							
2110	Overseas, Newspaper, Jounals	Magazine/PIM	0.36	4.95	5.00	0.36	5.00	0.36
2120	Dog food	Dog food/canned/700g	0.30	1.95	2.05	0.32	2.70	0.42
	<b>Sub total :</b>	<b>(Miscellaneous group)</b>	<b>3.88</b>			<b>4.66</b>		<b>4.80</b>
	<b>GRAND TOTAL:</b>	<b>(all groups)</b>	<b>100.00</b>			<b>100.99</b>		<b>98.32</b>

SUMMARY SHEET

GROUP	APR '10 INDEX	MAY '10 INDEX	DIFFERENCE	% INCREASE (+) DECREASE (-)
FOOD	56.48	54.07	-2.41	-4.26
ALCOHOL & TOBACCO	17.05	17.05	0.00	0.00
CLOTHING	3.39	3.38	-0.01	-0.35
HOUSING	3.00	3.00	0.00	-0.09
HOUSEHOLD OPERATIONS	8.85	8.50	-0.35	-3.95
TRANSPORT & COMMUNICATION	7.55	7.51	-0.04	-0.48
MISCELLANEOUS	4.66	4.80	0.14	2.98
<b>TOTAL</b>	<b>100.99</b>	<b>98.32</b>	<b>-2.67</b>	<b>-2.64</b>

REF-NO	ITEM NAME	DESCRIPTION	WEIGHT	01 AUG '08 BASE PRICE	MAY '09 PRICE	INDEX	MAY '10 PRICE	INDEX
	<u>RICE &amp; OTHER CEREALS</u>							
1010	Rice	Imported rice/sunwhite/bag/25kg	15.48	41.00	53.50	20.20	41.40	15.63
1020	Bread (sliced loaf)	Bread//white/local/sliced loaf	3.65	1.75	2.00	4.17	1.93	4.03
1030	Noodles	Noodles/sachet/85g	1.68	0.53	0.60	1.89	0.62	1.95
1040	Other bread and Biscuits	Dry biscuits/brand/250g	0.54	2.10	2.65	0.68	2.70	0.69
1050	Self raising	Imported Flour/self raising/1kg	0.39	2.50	2.63	0.41	3.02	0.47
	<u>MEAT</u>							
1060	Chicken	Imported Chicken/cuts/2kg	7.99	9.18	7.63	6.64	7.98	6.95
1070	Canned Meat	Tinned beef/corned beef/imperial/326g	3.63	4.53	4.50	3.61	4.33	3.47
1080	Canned Meat	Tinned meat/luncheon/397g	1.69	2.43	1.53	1.06	1.73	1.20
1090	Sausages	Sausages/1pack/pork/1kg	1.07	7.33	4.05	0.59	4.05	0.59
	<u>SEAFOOD</u>							
1100	Fish	Tuna/Skipjack(bonita)/1 kg	2.50	6.00	5.00	2.08	4.00	1.67
1110	Canned Fish	Imported tinned mackerel/brand/425g	0.92	2.55	3.47	1.25	2.88	1.04
1120	Reef fish	Reef fish/1 kg	0.75	8.00	8.00	0.75	8.00	0.75
1130	Canned Fish	Tinned sardines/sardines/425g	0.50	2.35	2.97	0.63	3.00	0.64
	<u>FOOD, FRUIT &amp; VEGETABLES</u>							
1140	Canned Tomatoes	Tinned tomatoes/brand/400g	0.71	1.97	1.87	0.68	1.83	0.66
1150	Onions and Chives	Onions/sea feight/1kg	0.34	3.95	5.26	0.45	5.78	0.50
1160	Potatoes	Potatoes/sea freight/1kg	0.14	3.90	4.07	0.15	4.25	0.15
	<u>DAIRY</u>							
1170	Butter	Imported butter/brand/250g	1.43	2.65	2.52	1.36	2.92	1.57
1180	Milk powder	Milk powder/brand/1kg	0.99	12.87	12.20	0.94	11.40	0.88
1190	Cooking Oil	Cooking oil/brand/750ml	0.52	4.57	5.06	0.58	5.22	0.59
1200	Fresh milk	Fresh milk/full cream/1litre	0.42	2.63	2.86	0.46	2.83	0.45
1210	Eggs	Imported Eggs/dozen/600g	0.29	5.47	5.93	0.31	6.00	0.32

REF-NO	ITEM NAME	DESCRIPTION	WEIGHT	01 AUG '08 BASE PRICE	MAY '09 PRICE	INDEX	MAY '10 PRICE	INDEX
	<u>OTHER FOODS</u>							
1220	Soft drink	Soft drinks//brand/1can/375ml	0.96	1.03	1.08	1.00	1.17	1.09
1230	Sugar	Imported sugar/white/brand/2kg	4.60	4.10	4.18	4.69	4.15	4.66
1240	Soya sauce	Soya sauce/light/500ml	0.58	2.90	2.95	0.59	2.92	0.58
1250	Tea	Imported tea/100 bags/180g	0.49	4.60	3.80	0.40	3.80	0.40
1260	Coffee	Imported coffee/brand/100g	0.45	7.42	4.78	0.29	4.68	0.28
1270	Baby food	Baby food/heinz/vanilla custard/110g	0.44	1.27	1.33	0.46	1.48	0.51
	<u>TAKE AWAY</u>							
1280	Plate of food/Take away	Plate of food/take away	2.20	3.77	3.38	1.97	3.38	1.97
1290	Dinner out	Dinner for two/Formal/Reynaldo	0.36	22.50	22.50	0.36	22.50	0.36
	<b>Sub total :</b>	<b>(Food group)</b>	<b>55.71</b>			<b>58.67</b>		<b>54.06</b>
	<u>ALCOHOL &amp; TOBACCO</u>							
1410	Beer	Beer/brand/1can/375ml	4.27	2.00	1.90	4.06	1.65	3.52
1420	Cigarettes	Cigarettes/Alpine brand/1packet/25 sticks	12.20	5.50	5.83	12.93	6.10	13.53
	<b>Sub total :</b>	<b>(Alcohol &amp; Tobacco group)</b>	<b>16.47</b>			<b>16.99</b>		<b>17.05</b>
	<u>CLOTHING</u>							
1510	Nappies	Nappies/plastic/brand/size medium/20 per pack	0.81	17.04	13.60	0.65	13.45	0.64
1520	Mumu	Casual/imported formal dress/mumu size large	0.85	15.60	35.00	1.91	30.00	1.63
1530	T/Shirt	Imported T-shirt/duel sex/size large	0.37	10.65	8.75	0.30	12.50	0.43
	<u>FOOTWEAR</u>							
1540	Footwear	Shoes/womens slip-ons/size 9	0.14	3.00	14.35	0.67	14.35	0.67
	<b>Sub total :</b>	<b>(Clothing group)</b>	<b>2.17</b>			<b>3.53</b>		<b>3.38</b>
	<u>RENT</u>							
1610	Rent for dwelling per month	Rent unit/MQ/Location	0.23	75.00	75.00	0.23	75.00	0.23

REF-NO	ITEM NAME	DESCRIPTION	WEIGHT	01 AUG '08 BASE PRICE	MAY '09 PRICE	INDEX	MAY '10 PRICE	INDEX
	<u>MAINTENANCE</u>							
1620	Ceramic tiles	Tiles/plastic tiles/size square cm/1case()	1.54	68.80	46.50	1.04	46.50	1.04
1630	Cement	Cement/bag/40 kg	0.76	20.60	22.70	0.84	23.00	0.85
1640	Paint	Paint/brand/enamel/4litre	0.51	62.63	59.50	0.48	64.67	0.53
1650	Timber	Timber/treated pine/4x2/metres	0.44	47.00	34.00	0.32	38.00	0.36
	<b>Sub total :</b>	<b>(Housing group)</b>	<b>3.48</b>			<b>2.91</b>		<b>3.00</b>
	<u>BILLS</u>							
1710	Electricity bill	Electricity bill/kilowatt per hour	1.60	0.30	0.30	1.60	0.15	0.80
1720	Water bill	Water Bill/per 10 litre	0.35	0.03	0.03	0.35	0.03	0.35
	<u>APPLIANCES</u>							
1730	Freezer	Freezer	1.12	750.00	1337.50	2.00	1016.25	1.52
1740	Refridgerator	Refridgerator	0.73	1635.00	1635.00	0.73	1527.50	0.68
1750	Television	Television/brand/15 inch	0.71	369.50	333.33	0.64	448.67	0.86
1760	Washing machine	Washing machine/brand/5kg capacity	0.68	1195.00	1010.00	0.57	993.17	0.57
	<u>FURNITURE</u>							
1770	Light fitting	Light fitting/brand/60watt globe	0.28	2.50	1.74	0.19	1.94	0.22
1780	Beds	Beds/single/foam-sponge	0.25	400.00	425.00	0.27	425.00	0.27
	<u>SUPPLIES</u>							
1790	Toilet paper	Toilet Paper/brand/1000 sheets	1.23	2.15	2.22	1.27	2.33	1.33
1800	Washing soap powder	Washing soap powder/brand/500g	0.71	5.60	3.77	0.48	4.90	0.62
1810	Mosquito coil	Mosquito coil/1packet/10coils/120g	0.69	1.14	1.10	0.67	1.18	0.72
1820	Dishwashing liquid	Dishwashing liquid/brand/500ml	0.30	3.48	2.26	0.19	2.33	0.20
1830	Batteries	Batteries/brand/1pack/2 x size D	0.17	2.52	6.33	0.43	5.43	0.37
	<b>Sub total :</b>	<b>(Household Operations group)</b>	<b>8.82</b>			<b>9.39</b>		<b>8.50</b>

## Appendix 2

## Consumer Price Index - Annual change

15/06/10

REF-NO	ITEM NAME	DESCRIPTION	WEIGHT	01 AUG '08 BASE PRICE	MAY '09 PRICE	INDEX	MAY '10 PRICE	INDEX
	<u>TRANSPORT &amp; COMMUNICATIONS</u>							
1910	Petrol	Petrol/1 litre	5.34	2.00	1.64	4.38	1.54	4.10
1920	Airfair	Return ticket/Australia	2.88	1468.00	1228.00	2.41	1258.00	2.47
1930	Oil	Oil/brand/multi-grade/1litre	0.48	14.37	8.77	0.29	8.56	0.29
1940	Deisel	Diesel/1 litre	0.43	2.05	1.78	0.37	1.54	0.32
1950	Departure tax	Departure Tax	0.22	50.00	50.00	0.22	50.00	0.22
1960	Other communication	International call card to Australia/rate per hour	0.12	6.00	6.00	0.12	6.00	0.12
	<b>Sub total :</b>	<b>(Transport &amp; Communication group)</b>	<b>9.47</b>			<b>7.79</b>		<b>7.51</b>
	<u>HEALTH</u>							
2010	Hospital charges	Hospital charges/Minor surgery	0.35	20.00	20.00	0.35	20.00	0.35
2020	Doctors/dentists fees	Doctors/dentist/Consultation fees	0.33	10.00	10.00	0.33	10.00	0.33
	<u>EDUCATION</u>							
2030	School clothing	School clothing/Shirts/shorts	0.34	10.00	10.00	0.34	10.00	0.34
2040	Books & schooling supplies	Exercise Books/brand/64pages	0.16	0.85	1.00	0.19	1.00	0.19
	<u>RECREATION</u>							
2050	Records, Cassettes,CD's	Blank CDR/brand/single/700mb	0.64	1.25	1.20	0.61	1.47	0.75
2060	Fishing equipment and supplies	Fishing hook//brand/Nickel coated/size 7/0	0.34	0.20	0.50	0.85	0.50	0.85
2070	DVD hire	DVD hire	0.16	2.00	2.00	0.16	2.00	0.16
	<u>PERSONAL PRODUCTS</u>							
2080	Bathing soap (liquid/bar )	Soap/bar/brand/100g	0.60	0.89	0.86	0.58	1.08	0.73
2090	Toothpaste	Toothpaste/brand/90g	0.17	2.63	2.38	0.15	2.50	0.16
2100	Deodorant, body spray	Deodorant/brand/body spray/100ml	0.13	3.90	4.87	0.16	4.90	0.16
	<u>MISCELANEOUS</u>							
2110	Overseas, Newspaper, Jounals	Magazine/PIM	0.36	4.95	4.95	0.36	5.00	0.36
2120	Dog food	Dog food/canned/700g	0.30	1.95	2.40	0.37	2.70	0.42
	<b>Sub total :</b>	<b>(Miscellaneous group)</b>	<b>3.88</b>			<b>4.46</b>		<b>4.81</b>
	<b>GRAND TOTAL:</b>	<b>(all groups)</b>	<b>100.00</b>			<b>103.74</b>		<b>98.32</b>

SUMMARY SHEET

GROUP	MAY '09 INDEX	MAY '10 INDEX	DIFFERENCE	% INCREASE (+) DECREASE (-)
FOOD	58.67	54.06	-4.60	-7.85
ALCOHOL & TOBACCO	16.99	17.05	0.07	0.38
CLOTHING	3.53	3.38	-0.15	-4.23
HOUSING	2.91	3.00	0.09	3.11
HOUSEHOLD OPERATIONS	9.39	8.50	-0.89	-9.47
TRANSPORT & COMMUNICATION	7.79	7.51	-0.28	-3.59
MISCELLANEOUS	4.46	4.81	0.35	7.76
<b>TOTAL</b>	<b>103.74</b>	<b>98.32</b>	<b>-5.42</b>	<b>-5.23</b>