

**CONSUMER PRICE INDEX
MONTHLY REPORT**

MAY 2011



PREPARED BY:

**BUREAU OF STATISTICS
DEPARTMENT OF FINANCE**

22.02.12

THE CONSUMER PRICE INDEX

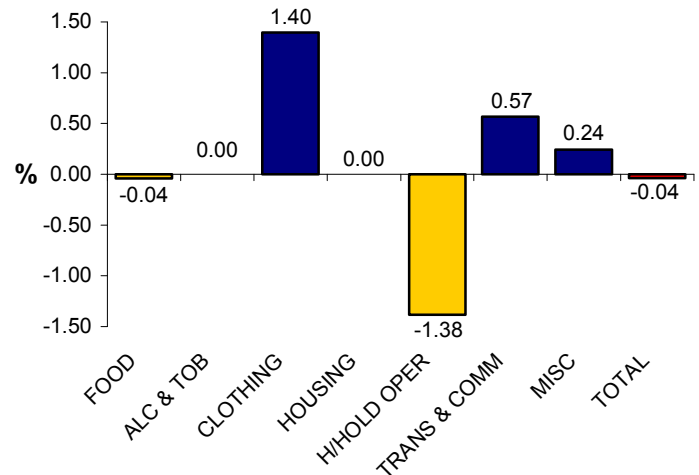
1. Monthly Change

The CPI month of May 2011 registered a **98.08** index change which show a decreased by **0.04** percent from the previous month of April 2011. The Table below validates the variations of the CPI index between the two observation periods and enclosed in Appendix 1 is the CPI market basket for comparisons. Similarly the annual CPI market basket is attached in Appendix 2 as well as Technical notes in Appendix 3 for readers/users reference.

Table **Change in Monthly Group Indices**

GROUP	APR '11 INDEX	MAY '11 INDEX	DIFF	% INC (+) DEC (-)
FOOD	55.20	55.18	-0.02	-0.04
ALCOHOL & TOBACCO	15.72	15.72	0.00	0.00
CLOTHING	3.36	3.41	0.05	1.40
HOUSING	2.91	2.91	0.00	0.00
HOUSEHOLD OPERATION	8.59	8.47	-0.12	-1.38
TRANSPORT & COMMUNICATION	7.78	7.82	0.04	0.57
MISCELLANEOUS	4.57	4.58	0.01	0.24
TOTAL	98.12	98.08	-0.04	-0.04

Chart 1. **% change for May 2011**



Note: Discrepancy of numbers is due to calculations and rounding.

1.1 Monthly Observation

The Consumer Price Index for household consumers continued to report raupt declines since February 2011 with an insignificant drop of **0.04** percent for May 2011 which is virtually unchanged. This is the result from decreasing indices from two of the seven major groups. Household operations posted the highest drop with a **1.38** percent following a decrease in April 2011. The decrease index of dishwashing liquid (26.32%), toilet paper (6.21%) and disposable batteries (1.81%) have contributed to the group decline. The Food index decreased as well with an insignificant **0.04** percent after repetitive declines since February. It's mainly affected by minor decreases of 1kg self raising flour, tinned tomatoes and 2kg sugar.

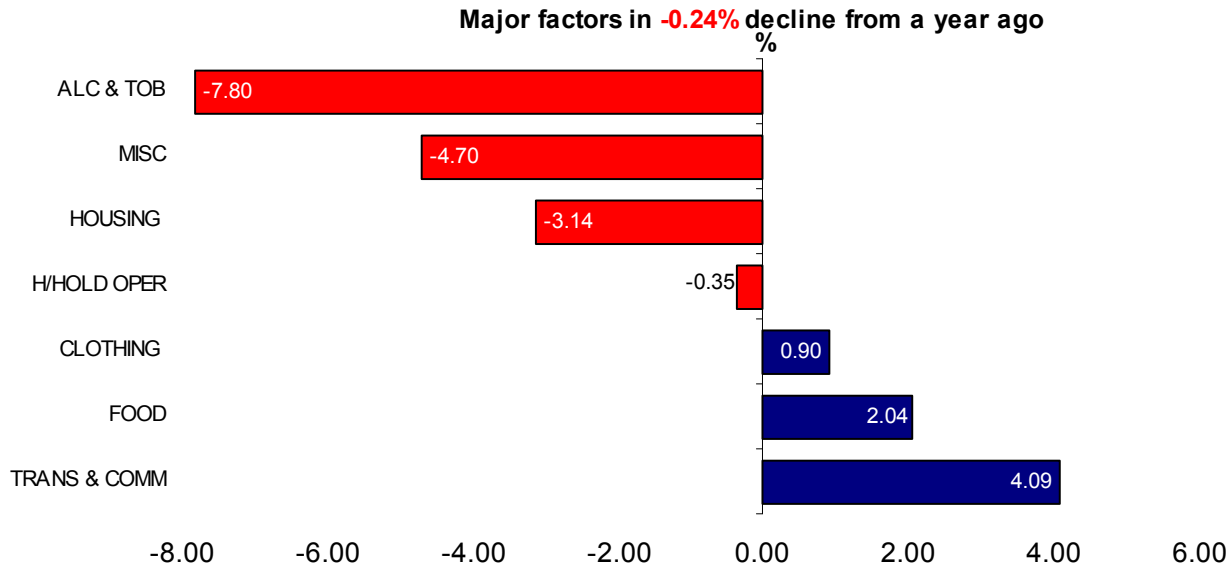
As for the indexes posting monthly growths the Clothing group reported the largest increase of **1.40** percent after posting a decrease in the previous month. The rise is traced to increased indexes for women slip on shoe 4.53% and 20 pack nappies 2.67%. The Transport & Communications group continued to post positive growth with **0.57** percent after an increase last month as a result for oil index which trend upward with (14.22%). Miscellaneous group also rose with **0.24** percent after posting a decrease last month. Slight increases are attributed to positive growth of dog food 9.76% and toothpaste 5.04%.

The index for Alcohol & Tobacco and Housing remained steady this month after both reporting decreases last month.

2. Annual Change

Year to date continued downward trend in Nauru's CPI to 0.24 percent in May 2011 following a decrease (2.83%) in the annualised April 2011 CPI. The main contributors to the annual deflation were the smaller groups in terms of weight which are;—Alcohol & Tobacco, Miscellaneous, Housing, and Clothing.

Chart 2. Annualised % change since May 2010



2.1 Annual Observation

The year to date change reported deflations for goods and services on four of the seven major groups. Heading the annual deflation is the Alcohol & Tobacco index posting the largest fall of 7.80 percent. The single falling index of cigarettes (9.84%) has attributed to the group decline.

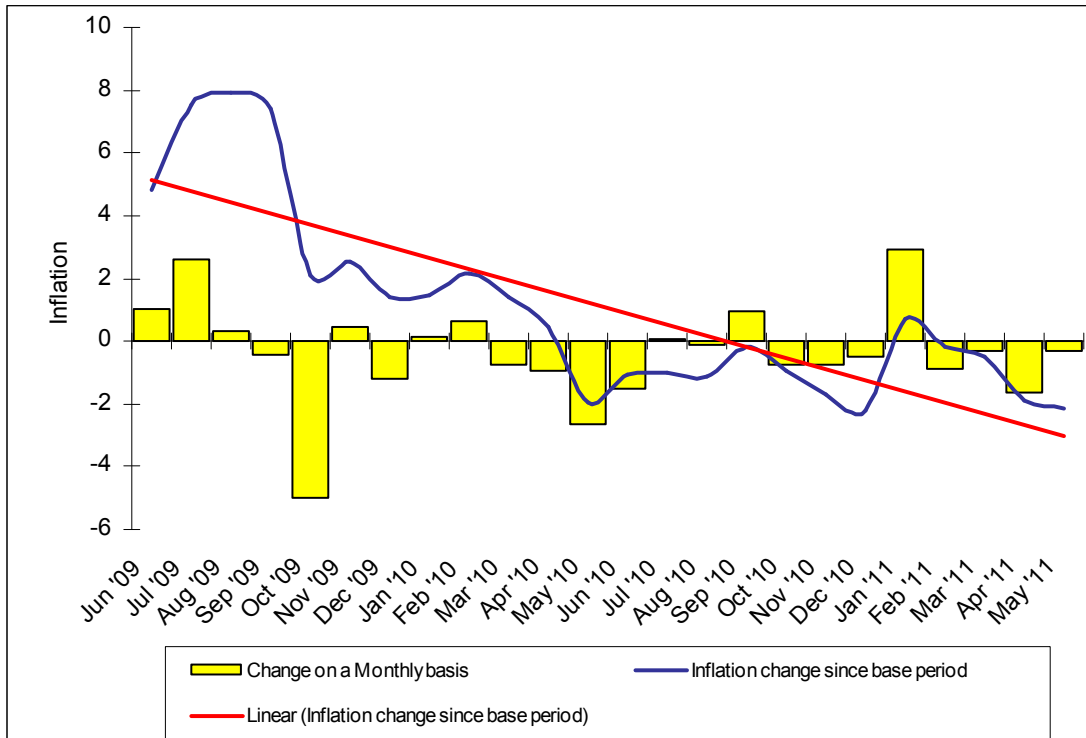
Miscellaneous group posted similar trend with 4.70 percent and the deflated index for a bathing soap (21.54%) and dog food (16.67%) have contributed to the drop. Housing group also posted a decline with 3.14 percent compared to a year ago and is attributed to drops in timber (15.79%) and paint (7.22%). Household operation recorded the smallest decrease of all with 0.35 percent and is attributed to drops in washing soap powder (6.80%) and toilet paper (2.86%).

On the contrary, three groups posted annual increases lead by Transport & Communications with 4.09%, followed by Food 2.04% then Clothing 0.90%. Within Transport & Communications the prices of automotive fuels and oil have gone up and the most visible is the surging of oil prices which rose 23.83 percent. Food group posted an increase for this month after recording an annual decline for the previous month of April. Broad range of food commodities rose however the most noticeable being tinned meat (13.55%), noodles (12.90%) and SAO biscuits (8.89%). In Clothing the increased price of ladies slip on shoes have independently affected the growth.

3. All Groups CPI Series

The All Groups CPI Series (Chart 3) presents historical data for the past 24 months which have two measuring components. First the bar graphs point out the percentage movements of the All Groups CPI from one month to the other. The line graph depicts the percentage change from CPI base period (August 2010) to corresponding monthly CPIs.

Chart 3. All Groups CPI Monthly variables and Inflation trend since base period



3.1 Historical Outlook

i. Change on a Monthly basis

It is evident that the volatility of the All groups CPI is particularly evident when observing the Change on a monthly variables in the last 24 months. The seasonal factors on certain commodities especially on food items have a significant impact on the overall outlook of the series. Recently in last four months since February the All groups monthly change has been registering slight declines on average with less than 1 percent (see Chart 3). With recent declines for May was mainly attributed by drops of Household operations and to some extent the small decline on Food group.

ii. Inflation change since base period

The All groups inflation since change since base period reflect a steady decline over the 24 months observation with the inflation ceiling observed between July and September 2009 due to spiked price for rice. Easing of global demand on rice has converged to stabilizing the All groups inflation overtime. The month of May and December 2010 and May 2011 posted the most noticeable declines in the series.

4. Conclusion

Virtually the CPI on a month by month basis (April – May) posted insignificant changes with no major fluctuations occurring during the period. Likewise for the annualised changed (May 2010 vs May 2011) which also posted insignificant change.

The most obvious outcome for this period is the easing of inflation since base period which continued the downward trend over the 24 months observation.

				01 AUG '08	APR '11		MAY '11	
REF-NO	ITEM NAME	DESCRIPTION	WEIGHT	BASE PRICE	PRICE	INDEX	PRICE	INDEX
	<u>RICE & OTHER CEREALS</u>							
1010	Rice	Imported rice/sunwhite/bag/25kg	15.48	41.00	41.67	15.73	41.50	15.67
1020	Bread (sliced loaf)	Bread//white/local/sliced loaf	3.65	1.75	1.93	4.03	1.93	4.03
1030	Noodles	Noodles/sachet/85g	1.68	0.53	0.67	2.11	0.70	2.22
1040	Other bread and Biscuits	Dry biscuits/brand/250g	0.54	2.10	2.96	0.76	2.94	0.76
1050	Self raising	Imported Flour/self raising/1kg	0.39	2.50	3.86	0.60	3.26	0.51
	<u>MEAT</u>							
1060	Chicken	Imported Chicken/cuts/2kg	7.99	9.18	8.10	7.05	8.50	7.40
1070	Canned Meat	Tinned beef/corned beef/imperial/326g	3.63	4.53	5.00	4.01	4.92	3.94
1080	Canned Meat	Tinned meat/luncheon/397g	1.69	2.43	1.73	1.21	1.73	1.21
1090	Sausages	Sausages/1pack/pork/1kg	1.07	7.33	4.05	0.59	4.05	0.59
	<u>SEAFOOD</u>							
1100	Fish	Tuna/Skipjack(bonita)/1 kg	2.50	6.00	4.00	1.67	4.00	1.67
1110	Canned Fish	Imported tinned mackerel/brand/425g	0.92	2.55	2.73	0.98	2.88	1.04
1120	Reef fish	Reef fish/1 kg	0.75	8.00	8.00	0.75	8.00	0.75
1130	Canned Fish	Tinned sardines/sardines/425g	0.50	2.35	3.03	0.64	3.03	0.64
	<u>FOOD, FRUIT & VEGETABLES</u>							
1140	Canned Tomatoes	Tinned tomatoes/brand/400g	0.71	1.97	2.09	0.75	1.88	0.68
1150	Onions and Chives	Onions/sea feight/1kg	0.34	3.95	3.36	0.29	3.44	0.30
1160	Potatoes	Potatoes/sea freight/1kg	0.14	3.90	3.28	0.12	3.25	0.12
	<u>DAIRY</u>							
1170	Butter	Imported butter/brand/250g	1.43	2.65	2.82	1.52	2.95	1.59
1180	Milk powder	Milk powder/brand/1kg	0.99	12.87	11.72	0.90	11.28	0.87
1190	Cooking Oil	Cooking oil/brand/750ml	0.52	4.57	4.90	0.56	5.23	0.60
1200	Fresh milk	Fresh milk/full cream/1litre	0.42	2.63	2.90	0.46	2.93	0.47
1210	Eggs	Imported Eggs/dozen/600g	0.29	5.47	5.80	0.31	5.68	0.30

				01 AUG '08	APR '11		MAY '11	
REF-NO	ITEM NAME	DESCRIPTION	WEIGHT	BASE PRICE	PRICE	INDEX	PRICE	INDEX
	<u>OTHER FOODS</u>							
1220	Soft drink	Soft drinks/brand/1can/375ml	0.96	1.03	1.00	0.93	1.13	1.06
1230	Sugar	Imported sugar/white/brand/2kg	4.60	4.10	4.65	5.22	4.18	4.69
1240	Soya sauce	Soya sauce/light/500ml	0.58	2.90	3.02	0.60	2.90	0.58
1250	Tea	Imported tea/100 bags/180g	0.49	4.60	3.28	0.35	3.53	0.38
1260	Coffee	Imported coffee/brand/100g	0.45	7.42	3.62	0.22	5.02	0.30
1270	Baby food	Baby food/heinz/vanilla custard/110g	0.44	1.27	1.44	0.50	1.46	0.51
	<u>TAKE AWAY</u>							
1280	Plate of food/Take away	Plate of food/take away	2.20	3.77	3.38	1.97	3.38	1.97
1290	Dinner out	Dinner for two/Formal/Reynaldo	0.36	22.50	22.50	0.36	22.50	0.36
	Sub total :	(Food group)	55.71			55.20		55.18
	<u>ALCOHOL & TOBACCO</u>							
1410	Beer	Beer/brand/1can/375ml	4.27	2.00	1.65	3.52	1.65	3.52
1420	Cigarettes	Cigarettes/Alpine brand/1packet/25 sticks	12.20	5.50	5.50	12.20	5.50	12.20
	Sub total :	(Alcohol & Tobacco group)	16.47			15.72		15.72
	<u>CLOTHING</u>							
1510	Nappies	Nappies/plastic/brand/size medium/20 per pack	0.81	17.04	13.10	0.62	13.45	0.64
1520	Mumu	Casual/imported formal dress/mumu size large	0.85	15.60	30.00	1.63	30.00	1.63
1530	T/Shirt	Imported T-shirt/duel sex/size large	0.37	10.65	12.50	0.43	12.50	0.43
	<u>FOOTWEAR</u>							
1540	Footwear	Shoes/womens slip-ons/size 9	0.14	3.00	14.35	0.67	15.00	0.70
	Sub total :	(Clothing group)	2.17			3.36		3.41
	<u>RENT</u>							
1610	Rent for dwelling per month	Rent unit/MQ/Location	0.23	75.00	75.00	0.23	75.00	0.23

				01 AUG '08	APR '11		MAY '11	
REF-NO	ITEM NAME	DESCRIPTION	WEIGHT	BASE PRICE	PRICE	INDEX	PRICE	INDEX
	<u>MAINTENANCE</u>							
1620	Ceramic tiles	Tiles/plastic tiles/size square cm/1case()	1.54	68.80	46.50	1.04	46.50	1.04
1630	Cement	Cement/bag/40 kg	0.76	20.60	23.00	0.85	23.00	0.85
1640	Paint	Paint/brand/enamel/4litre	0.51	62.63	60.00	0.49	60.00	0.49
1650	Timber	Timber/treated pine/4x2/4.8metres	0.44	47.00	32.00	0.30	32.00	0.30
	Sub total :	(Housing group)	3.48			2.91		2.91
	<u>BILLS</u>							
1710	Electricity bill	Electricity bill/kilowatt per hour	1.60	0.30	0.15	0.80	0.15	0.80
1720	Water bill	Water Bill/per 10 litre	0.35	0.03	0.03	0.35	0.03	0.35
	<u>APPLIANCES</u>							
1730	Freezer	Freezer	1.12	750.00	1016.25	1.52	1016.25	1.52
1740	Refridgerator	Refridgerator	0.73	1635.00	1527.50	0.68	1527.50	0.68
1750	Television	Television/brand/15 inch	0.71	369.50	448.67	0.86	448.67	0.86
1760	Washing machine	Washing machine/brand/5kg capacity	0.68	1195.00	993.17	0.57	993.17	0.57
	<u>FURNITURE</u>							
1770	Light fitting	Light fitting/brand/60watt globe	0.28	2.50	1.94	0.22	1.94	0.22
1780	Beds	Beds/single/foam-sponge	0.25	400.00	425.00	0.27	425.00	0.27
	<u>SUPPLIES</u>							
1790	Toilet paper	Toilet Paper/brand/1000 sheets	1.23	2.15	2.42	1.38	2.27	1.30
1800	Washing soap powder	Washing soap powder/brand/500g	0.71	5.60	4.37	0.55	4.57	0.58
1810	Mosquito coil	Mosquito coil/1packet/10coils/120g	0.69	1.14	1.23	0.75	1.27	0.77
1820	Dishwashing liquid	Dishwashing liquid/brand/500ml	0.30	3.48	3.17	0.27	2.33	0.20
1830	Batteries	Batteries/brand/1pack/2 x size D	0.17	2.52	5.53	0.37	5.43	0.37
	Sub total :	(Household Operations group)	8.82			8.59		8.47

				01 AUG '08	APR '11		MAY '11	
REF-NO	ITEM NAME	DESCRIPTION	WEIGHT	BASE PRICE	PRICE	INDEX	PRICE	INDEX
	<u>TRANSPORT & COMMUNICATIONS</u>							
1910	Petrol	Petrol/1 litre	5.34	2.00	1.62	4.32	1.62	4.32
1920	Airfair	Return ticket/Australia	2.88	1468.00	1258.00	2.47	1258.00	2.47
1930	Oil	Oil/brand/multi-grade/1litre	0.48	14.37	9.28	0.31	10.60	0.35
1940	Deisel	Diesel/1 litre	0.43	2.05	1.62	0.34	1.62	0.34
1950	Departure tax	Departure Tax	0.22	50.00	50.00	0.22	50.00	0.22
1960	Other communication	International call card to Australia/rate per hour	0.12	6.00	6.00	0.12	6.00	0.12
	Sub total :	(Transport & Communication group)	9.47			7.78		7.82
	<u>HEALTH</u>							
2010	Hospital charges	Hospital charges/Minor surgery	0.35	20.00	20.00	0.35	20.00	0.35
2020	Doctors/dentists fees	Doctors/dentist/Consultation fees	0.33	10.00	10.00	0.33	10.00	0.33
	<u>EDUCATION</u>							
2030	School clothing	School clothing/Shirts/shorts	0.34	10.00	10.00	0.34	10.00	0.34
2040	Books & schooling supplies	Exercise Books/brand/64pages	0.16	0.85	1.00	0.19	1.00	0.19
	<u>RECREATION</u>							
2050	Records, Cassettes,CD's	Blank CDR/brand/single/700mb	0.64	1.25	1.47	0.75	1.47	0.75
2060	Fishing equipment and supplies	Fishing hook/brand/Nickel coated/size 7/0	0.34	0.20	0.50	0.85	0.50	0.85
2070	DVD hire	DVD hire	0.16	2.00	2.00	0.16	2.00	0.16
	<u>PERSONAL PRODUCTS</u>							
2080	Bathing soap (liquid/bar)	Soap/bar/brand/100g	0.60	0.89	0.88	0.60	0.85	0.57
2090	Toothpaste	Toothpaste/brand/90g	0.17	2.63	2.38	0.15	2.50	0.16
2100	Deodorant, body spray	Deodorant/brand/body spray/100ml	0.13	3.90	5.08	0.17	4.93	0.16
	<u>MISCELANEOUS</u>							
2110	Overseas, Newspaper, Jounals	Magazine/PIM	0.36	4.95	5.00	0.36	5.00	0.36
2120	Dog food	Dog food/canned/700g	0.30	1.95	2.05	0.32	2.25	0.35
	Sub total :	(Miscellaneous group)	3.88			4.57		4.58
	GRAND TOTAL:	(all groups)	100.00			98.12		98.08

SUMMARY SHEET

GROUP	APR '11 INDEX	MAY '11 INDEX	DIFFERENCE	% INCREASE (+) DECREASE (-)
FOOD	55.20	55.18	-0.02	-0.04
ALCOHOL & TOBACCO	15.72	15.72	0.00	0.00
CLOTHING	3.36	3.41	0.05	1.40
HOUSING	2.91	2.91	0.00	0.00
HOUSEHOLD OPERATIONS	8.59	8.47	-0.12	-1.38
TRANSPORT & COMMUNICATION	7.78	7.82	0.04	0.57
MISCELLANEOUS	4.57	4.58	0.01	0.24
TOTAL	98.12	98.08	-0.04	-0.04

<u>REF-NO</u>	<u>ITEM NAME</u>	<u>DESCRIPTION</u>	<u>WEIGHT</u>	<u>01 AUG '08 BASE PRICE</u>	<u>MAY '10 PRICE</u>	<u>INDEX</u>	<u>MAY '11 PRICE</u>	<u>INDEX</u>
	<u>RICE & OTHER CEREALS</u>							
1010	Rice	Imported rice/sunwhite/bag/25kg	15.48	41.00	41.40	15.63	41.50	15.67
1020	Bread (sliced loaf)	Bread//white/local/sliced loaf	3.65	1.75	1.93	4.03	1.93	4.03
1030	Noodles	Noodles/sachet/85g	1.68	0.53	0.62	1.97	0.70	2.22
1040	Other bread and Biscuits	Dry biscuits/brand/250g	0.54	2.10	2.70	0.69	2.94	0.76
1050	Self raising	Imported Flour/self raising/1kg	0.39	2.50	3.02	0.47	3.26	0.51
	<u>MEAT</u>							
1060	Chicken	Imported Chicken/cuts/2kg	7.99	9.18	7.98	6.95	8.50	7.40
1070	Canned Meat	Tinned beef/corned beef/imperial/326g	3.63	4.53	4.33	3.47	4.92	3.94
1080	Canned Meat	Tinned meat/luncheon/397g	1.69	2.43	1.73	1.20	1.73	1.21
1090	Sausages	Sausages/1pack/pork/1kg	1.07	7.33	4.05	0.59	4.05	0.59
	<u>SEAFOOD</u>							
1100	Fish	Tuna/Skipjack(bonita)/1 kg	2.50	6.00	4.00	1.67	4.00	1.67
1110	Canned Fish	Imported tinned mackerel/brand/425g	0.92	2.55	2.88	1.04	2.88	1.04
1120	Reef fish	Reef fish/1 kg	0.75	8.00	8.00	0.75	8.00	0.75
1130	Canned Fish	Tinned sardines/sardines/425g	0.50	2.35	3.00	0.64	3.03	0.64
	<u>FOOD, FRUIT & VEGETABLES</u>							
1140	Canned Tomatoes	Tinned tomatoes/brand/400g	0.71	1.97	1.83	0.66	1.88	0.68
1150	Onions and Chives	Onions/sea feight/1kg	0.34	3.95	5.78	0.50	3.44	0.30
1160	Potatoes	Potatoes/sea freight/1kg	0.14	3.90	4.25	0.15	3.25	0.12
	<u>DAIRY</u>							
1170	Butter	Imported butter/brand/250g	1.43	2.65	2.92	1.57	2.95	1.59
1180	Milk powder	Milk powder/brand/1kg	0.99	12.87	11.40	0.88	11.28	0.87
1190	Cooking Oil	Cooking oil/brand/750ml	0.52	4.57	5.22	0.59	5.23	0.60
1200	Fresh milk	Fresh milk/full cream/1litre	0.42	2.63	2.83	0.45	2.93	0.47
1210	Eggs	Imported Eggs/dozen/600g	0.29	5.47	6.00	0.32	5.68	0.30

<u>REF-NO</u>	<u>ITEM NAME</u>	<u>DESCRIPTION</u>	<u>WEIGHT</u>	<u>01 AUG '08 BASE PRICE</u>	<u>APR '10 PRICE</u>	<u>INDEX</u>	<u>APR '11 PRICE</u>	<u>INDEX</u>
	<u>OTHER FOODS</u>							
1220	Soft drink	Soft drinks//brand/1can/375ml	0.96	1.03	1.17	1.09	1.13	1.06
1230	Sugar	Imported sugar/white/brand/2kg	4.60	4.10	4.15	4.66	4.18	4.69
1240	Soya sauce	Soya sauce/light/500ml	0.58	2.90	2.92	0.58	2.90	0.58
1250	Tea	Imported tea/100 bags/180g	0.49	4.60	3.80	0.40	3.53	0.38
1260	Coffee	Imported coffee/brand/100g	0.45	7.42	4.68	0.28	5.02	0.30
1270	Baby food	Baby food/heinz/vanilla custard/110g	0.44	1.27	1.48	0.51	1.46	0.51
	<u>TAKE AWAY</u>							
1280	Plate of food/Take away	Plate of food/take away	2.20	3.77	3.38	1.97	3.38	1.97
1290	Dinner out	Dinner for two/Formal/Reynaldo	0.36	22.50	22.50	0.36	22.50	0.36
	Sub total :	(Food group)	55.71			54.07		55.18
	<u>ALCOHOL & TOBACCO</u>							
1410	Beer	Beer/brand/1can/375ml	4.27	2.00	1.65	3.52	1.65	3.52
1420	Cigarettes	Cigarettes/Alpine brand/1packet/25 sticks	12.20	5.50	6.10	13.53	5.50	12.20
	Sub total :	(Alcohol & Tobacco group)	16.47			17.05		15.72
	<u>CLOTHING</u>							
1510	Nappies	Nappies/plastic/brand/size medium/20 per pack	0.81	17.04	13.45	0.64	13.45	0.64
1520	Mumu	Casual/imported formal dress/mumu size large	0.85	15.60	30.00	1.63	30.00	1.63
1530	T/Shirt	Imported T-shirt/duel sex/size large	0.37	10.65	12.50	0.43	12.50	0.43
	<u>FOOTWEAR</u>							
1540	Footwear	Shoes/womens slip-ons/size 9	0.14	3.00	14.35	0.67	15.00	0.70
	Sub total :	(Clothing group)	2.17			3.38		3.41
	<u>RENT</u>							
1610	Rent for dwelling per month	Rent unit/MQ/Location	0.23	75.00	75.00	0.23	75.00	0.23

				01 AUG '08	APR '10		APR '11	
<u>REF-NO</u>	<u>ITEM NAME</u>	<u>DESCRIPTION</u>	<u>WEIGHT</u>	<u>BASE PRICE</u>	<u>PRICE</u>	<u>INDEX</u>	<u>PRICE</u>	<u>INDEX</u>
	<u>MAINTENANCE</u>							
1620	Ceramic tiles	Tiles/plastic tiles/size square cm/1case()	1.54	68.80	46.50	1.04	46.50	1.04
1630	Cement	Cement/bag/40 kg	0.76	20.60	23.00	0.85	23.00	0.85
1640	Paint	Paint/brand/enamel/4litre	0.51	62.63	64.67	0.53	60.00	0.49
1650	Timber	Timber/treated pine/4x2/metres	0.44	47.00	38.00	0.36	32.00	0.30
	Sub total :	(Housing group)	3.48			3.00		2.91
	<u>BILLS</u>							
1710	Electricity bill	Electricity bill/kilowatt per hour	1.60	0.30	0.15	0.80	0.15	0.80
1720	Water bill	Water Bill/per 10 litre	0.35	0.03	0.03	0.35	0.03	0.35
	<u>APPLIANCES</u>							
1730	Freezer	Freezer	1.12	750.00	1016.25	1.52	1016.25	1.52
1740	Refridgerator	Refridgerator	0.73	1635.00	1527.50	0.68	1527.50	0.68
1750	Television	Television/brand/15 inch	0.71	369.50	448.67	0.86	448.67	0.86
1760	Washing machine	Washing machine/brand/5kg capacity	0.68	1195.00	993.17	0.57	993.17	0.57
	<u>FURNITURE</u>							
1770	Light fitting	Light fitting/brand/60watt globe	0.28	2.50	1.94	0.22	1.94	0.22
1780	Beds	Beds/single/foam-sponge	0.25	400.00	425.00	0.27	425.00	0.27
	<u>SUPPLIES</u>							
1790	Toilet paper	Toilet Paper/brand/1000 sheets	1.23	2.15	2.33	1.33	2.27	1.30
1800	Washing soap powder	Washing soap powder/brand/500g	0.71	5.60	4.90	0.62	4.57	0.58
1810	Mosquito coil	Mosquito coil/1packet/10coils/120g	0.69	1.14	1.18	0.72	1.27	0.77
1820	Dishwashing liquid	Dishwashing liquid/brand/500ml	0.30	3.48	2.33	0.20	2.33	0.20
1830	Batteries	Batteries/brand/1pack/2 x size D	0.17	2.52	5.43	0.37	5.43	0.37
	Sub total :	(Household Operations group)	8.82			8.50		8.47

				01 AUG '08	APR '10		APR '11	
REF-NO	ITEM NAME	DESCRIPTION	WEIGHT	BASE PRICE	PRICE	INDEX	PRICE	INDEX
	<u>TRANSPORT & COMMUNICATIONS</u>							
1910	Petrol	Petrol/1 litre	5.34	2.00	1.54	4.10	1.62	4.32
1920	Airfair	Return ticket/Australia	2.88	1468.00	1258.00	2.47	1258.00	2.47
1930	Oil	Oil/brand/multi-grade/1litre	0.48	14.37	8.56	0.29	10.60	0.35
1940	Deisel	Diesel/1 litre	0.43	2.05	1.54	0.32	1.62	0.34
1950	Departure tax	Departure Tax	0.22	50.00	50.00	0.22	50.00	0.22
1960	Other communication	International call card to Australia/rate per hour	0.12	6.00	6.00	0.12	6.00	0.12
	Sub total :	(Transport & Communication group)	9.47			7.51		7.82
	<u>HEALTH</u>							
2010	Hospital charges	Hospital charges/Minor surgery	0.35	20.00	20.00	0.35	20.00	0.35
2020	Doctors/dentists fees	Doctors/dentist/Consultation fees	0.33	10.00	10.00	0.33	10.00	0.33
	<u>EDUCATION</u>							
2030	School clothing	School clothing/Shirts/shorts	0.34	10.00	10.00	0.34	10.00	0.34
2040	Books & schooling supplies	Exercise Books/brand/64pages	0.16	0.85	1.00	0.19	1.00	0.19
	<u>RECREATION</u>							
2050	Records, Cassettes,CD's	Blank CDR/brand/single/700mb	0.64	1.25	1.47	0.75	1.47	0.75
2060	Fishing equipment and supplies	Fishing hook//brand/Nickel coated/size 7/0	0.34	0.20	0.50	0.85	0.50	0.85
2070	DVD hire	DVD hire	0.16	2.00	2.00	0.16	2.00	0.16
	<u>PERSONAL PRODUCTS</u>							
2080	Bathing soap (liquid/bar)	Soap/bar/brand/100g	0.60	0.89	1.08	0.73	0.85	0.57
2090	Toothpaste	Toothpaste/brand/90g	0.17	2.63	2.50	0.16	2.50	0.16
2100	Deodorant, body spray	Deodorant/brand/body spray/100ml	0.13	3.90	4.90	0.16	4.93	0.16
	<u>MISCELANEOUS</u>							
2110	Overseas, Newspaper, Jounals	Magazine/PIM	0.36	4.95	5.00	0.36	5.00	0.36
2120	Dog food	Dog food/canned/700g	0.30	1.95	2.70	0.42	2.25	0.35
	Sub total :	(Miscellaneous group)	3.88			4.80		4.58
	GRAND TOTAL:	(all groups)	100.00			98.32		98.08

SUMMARY SHEET

GROUP	MAY '10 INDEX	MAY '11 INDEX	DIFFERENCE	% INCREASE (+) DECREASE (-)
FOOD	54.07	55.18	1.10	2.04
ALCOHOL & TOBACCO	17.05	15.72	-1.33	-7.80
CLOTHING	3.38	3.41	0.03	0.90
HOUSING	3.00	2.91	-0.09	-3.14
HOUSEHOLD OPERATIONS	8.50	8.47	-0.03	-0.35
TRANSPORT & COMMUNICATION	7.51	7.82	0.31	4.09
MISCELLANEOUS	4.80	4.58	-0.23	-4.70
TOTAL	98.32	98.08	-0.24	-0.24

Technical Notes

Brief Explanation of the CPI

The Consumer Price Index (CPI) is a measure of the average change in prices over time of goods and services purchased by households. The basis of goods and services included in the CPI market basket is subsequently the basis for analysis of consumer spending from the Household Income & Expenditure Survey (HIES) carried out by the Bureau of Statistics in 2006. The bureau is mandated to publish monthly CPIs.

The CPIs are based on prices of food, clothing, beverages, fuels, transportation fares, household supplies and other goods and services that people buy for day-to-day living. Prices are collected each month across the island from 6 retail establishments, and other service providers associated within the CPI market basket. Prices of most goods and services are obtained through personal visits by Statistics staff and additional publications such as the Fuel Watch and public notices that reflect the goods and services within the CPI market basket. In calculating the index, price changes for the various items in each location are averaged together with weights that represent their importance. Local data are then combined to obtain a national average.

The index measures price change from a designated reference date. For the CPI, the reference base is 2008= 100.00. An increase of 16.5 percent from the reference base, for example, is shown as 116.5. This change also can be expressed in dollars as follows: the price of a base-period market basket of goods and services in the CPI has risen from \$10 in 2008 to \$11.65. For further details, contact the government operator at 557 3133 and ask for the Bureau of Statistics or extension 255.

Calculating index changes

Movements of the indexes from one month to another usually are expressed as percent changes, rather than changes in index points, because index point changes are affected by the level of the index in relation to its base period, whereas percent changes are not. The example shown in the box on this page illustrates the computation of index point and percent changes.

Percent changes within the CPI publication reflects for (1) monthly, (2) annual and (3) historical trends since base period are computed according to the standard formula for compound growth rates. These data indicate what the percent change would be if the current rate were maintained for the 3 periods specified in the latter.

Index point change		Visual calculation
CPI	202.416 (a)	(b) - (a) = (c)
Less previous index	201.8 (b)	
Equals index point change	0.616 (c)	
Percent change		
Index point difference	0.616	(c) ÷ (b) = (e)
Divided by the previous index	201.8 (d)	
Equals	0.003 (e)	
Results multiplied by one hundred	0.003 x 100	(e) x 100 = (f)
Equals percent change	0.3 (f)	