

**CONSUMER PRICE INDEX
MONTHLY REPORT**

JULY 2011



PREPARED BY:

**BUREAU OF STATISTICS
DEPARTMENT OF FINANCE**

24.02.12

THE CONSUMER PRICE INDEX

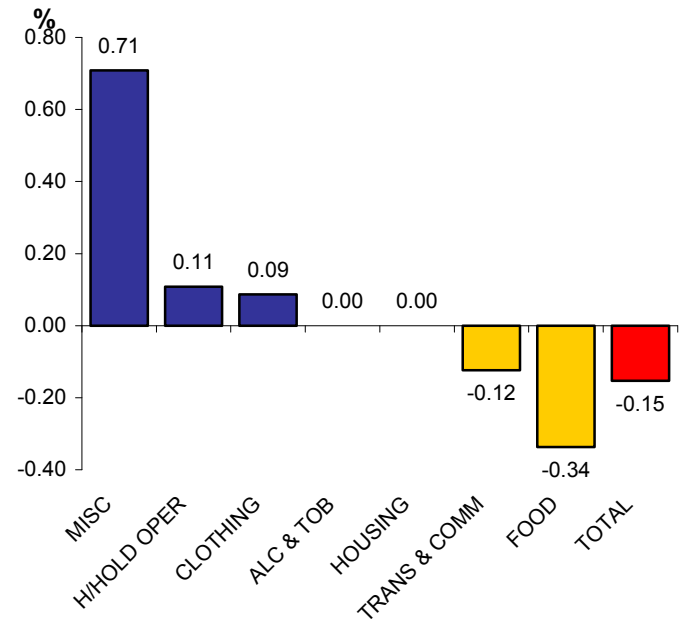
1. Monthly Change

The Index for the month of July 2011 registered a **97.82** index change which depicts a **0.15** percent decrease from the previous month of June 2011. The Table below validates the variations of the CPI index between the two observation periods and enclosed in Appendix 1 is the CPI market basket for comparisons. Similarly the annual CPI market basket is attached in Appendix 2 as well as Technical notes in Appendix 3 for readers/users reference.

Table **Change in Monthly Group Indices**

GROUP	JUN '11 INDEX	JUL '11 INDEX	DIFF	% INC (+) DEC (-)
FOOD	54.99	54.81	-0.19	-0.34
ALCOHOL & TOBACCO	15.72	15.72	0.00	0.00
CLOTHING	3.41	3.41	0.00	0.09
HOUSING	2.91	2.91	0.00	0.00
HOUSEHOLD OPERATION	8.48	8.49	0.01	0.11
TRANSPORT & COMMUNICATION	7.85	7.84	-0.01	-0.12
MISCELLANEOUS	4.61	4.64	0.03	0.71
TOTAL	97.97	97.82	-0.15	-0.15

Chart 1. **% change for July 2011**



Note: Discrepancy of numbers is due to calculations and rounding.

1.1 Monthly Observation

The Consumer Price Index for Households in Nauru decreased **0.15** percent in July following last months decreasing trend for the June observation. The index of Food and Transport & Communications were the main contributing factors affecting the decline. The Food index continued to decrease with **0.34** percent and the impact was broad-based and the flour index and tinned mackerel index was the largest contributor with drops of (5.16) and (5.02) percent respectively. The Transport & Communication also posted a decrease with **0.12** percent and the index of oil slipped (2.81) percent after increasing last month.

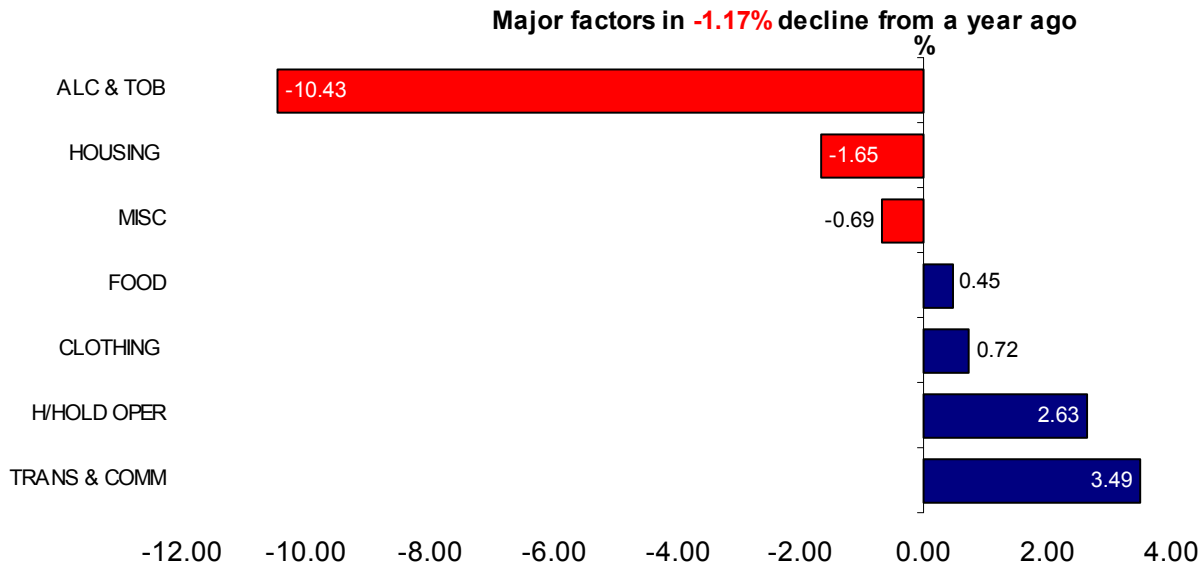
Three indexes posted increases this month namely the Miscellaneous, Household operations and Clothing group with **0.71**, **0.11** and **0.09** percent respectively. The index for Miscellaneous continued to trend upwards from previous month and the slight increases of tinned dog food with 4.26 percent and bathing soap 2.86 percent posted back to back growths. Within the Household operations the only component affecting the increase is the rising index of the washing soap powder which rose 4.03 percent. The index for Clothing rose as well with an insignificant increase for the index of nappies.

The index for Alcohol & Tobacco and Housing remained stable this period in fact these two indexes have remained constant since May 2011.

2. Annual Change

The Year to date change reported a decrease in Nauru's CPI to **1.17** percentage compared to July 2011, with the main contributors to the annual deflations being;—Alcohol & Tobacco, Housing and Miscellaneous.

Chart 2. Annualised % change since July 2010



2.1 Annual Observation

The year to date change reported constant deflations for goods and services on three of the seven major groups. Leading the annual deflation is the Alcohol & Tobacco index posting the largest fall of **10.43** percent. The deflation is attributed to the decreased index of cigarettes with 13.04 percent decline.

Likewise the index for Housing also posted a 12 months decline with **3.22** percent compared to a year ago and is attributed to the continued decrease of timber (15.79) percent. Within the Miscellaneous group with an annual deflation of **0.69** percent, the sole contributor is traced to the declining index of bathing soap with (10.74) percent.

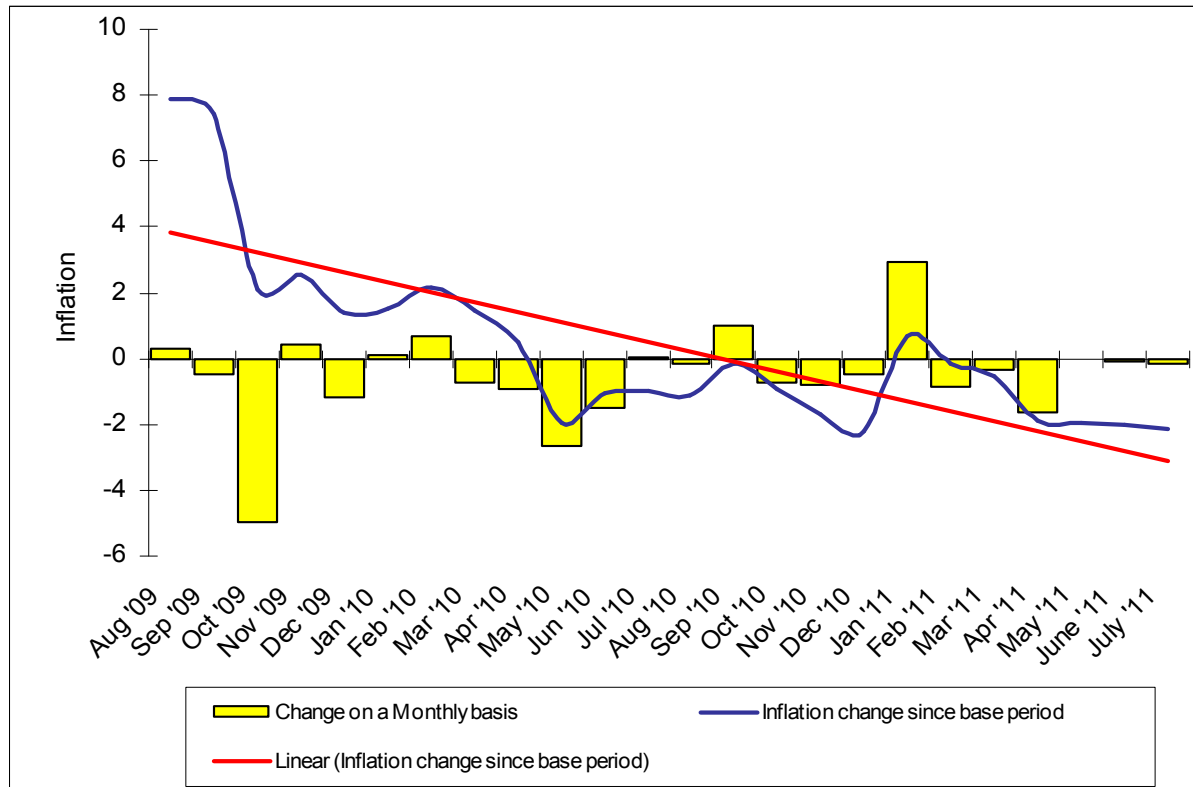
On the counter side of deflation, four indexes posted increases with Transport & Communications posting the highest with a growth of **3.49** percent. This is mainly influenced by re-surgings indexes of automotive fuels in diesel and petrol as well as the sharp rise of the oil index with 18.16 percent. All other components remained constant.

The increased index for the Household operations with **2.63** percent is attributed to the augmented electricity bills and washing soap powder. In Clothing with **0.72** percent increase, the single attributing factor is the continued upward trend for ladies slip-on shoes which posted an annual growth of 4.53 percent. Components affecting the small yet significant increases for the index of Food with **0.45** percent are mainly 2kg chicken and sugar with increases of 6.52 and 5.22 percent respectively.

3. All Groups CPI Series

The All Groups CPI Series (Chart 3) depicts historical data for the past 24 months which have two measuring components. First the bar graphs point out the percentage movements of the All Groups CPI from one month to the other. The line graph depicts the percentage change from CPI base period (August 2008) to corresponding monthly CPIs.

Chart 3. All Groups CPI Monthly variables and Inflation trend since base period



3.1 Historical Outlook

i. Change on a Monthly basis

The monthly change on the All groups index depicted in Chart 3 above has posted insignificant fluctuations since May 2011. Throughout this periods the supply of goods and services especially food products which are monitored in the CPI market basket have been available without any shortages of stock. The recent shortage of rice has not added any pressure towards the CPI which may have pushed the prices up mainly due to the timely shipping schedule, preventing potential shortages and possible spike in consumer prices.

ii. Inflation change since base period

Over the 24 months, inflation changes since base period have shown that the decrease is correlated to the monthly flow of inflation. Chart 3 depicts that since May 2011 until now, prices have sustained the decreasing trend of 2 percent indicating that consumers now have more spending power when compared to 2008 the base year for the CPI.

4. Conclusion

It is evident that the month on month inflation change is quite insignificant however when current prices are compared to prices from one or two years ago the changes are reasonably visible. These factors have been impacts on policies on goods and services overtime that are accounted in the CPI market basket. Consumer essentials such as the stabilising index of rice, petrol and diesel, the subsidised electricity bills are such small examples.

In comparison to Asia/Pacific the July edition on Food Prices reported a slight gain due to 1 percent increase of sugar prices.

				01 AUG '08	JUNE'11		JULY'11	
REF-NO	ITEM NAME	DESCRIPTION	WEIGHT	BASE PRICE	PRICE	INDEX	PRICE	INDEX
	<u>RICE & OTHER CEREALS</u>							
1010	Rice	Imported rice/sunwhite/bag/25kg	15.48	41.00	41.50	15.67	41.50	15.67
1020	Bread (sliced loaf)	Bread//white/local/sliced loaf	3.65	1.75	1.93	4.03	1.93	4.03
1030	Noodles	Noodles/sachet/85g	1.68	0.53	0.69	2.19	0.68	2.17
1040	Other bread and Biscuits	Dry biscuits/brand/250g	0.54	2.10	3.00	0.77	3.06	0.79
1050	Self raising	Imported Flour/self raising/1kg	0.39	2.50	3.10	0.48	2.94	0.46
	<u>MEAT</u>							
1060	Chicken	Imported Chicken/cuts/2kg	7.99	9.18	8.50	7.40	8.50	7.40
1070	Canned Meat	Tinned beef/corned beef/imperial/326g	3.63	4.53	4.79	3.84	4.67	3.74
1080	Canned Meat	Tinned meat/luncheon/397g	1.69	2.43	1.73	1.21	1.73	1.21
1090	Sausages	Sausages/1pack/pork/1kg	1.07	7.33	4.05	0.59	4.05	0.59
	<u>SEAFOOD</u>							
1100	Fish	Tuna/Skipjack(bonita)/1 kg	2.50	6.00	4.00	1.67	4.00	1.67
1110	Canned Fish	Imported tinned mackerel/brand/425g	0.92	2.55	2.74	0.99	2.60	0.94
1120	Reef fish	Reef fish/1 kg	0.75	8.00	8.00	0.75	8.00	0.75
1130	Canned Fish	Tinned sardines/sardines/425g	0.50	2.35	3.03	0.64	3.03	0.64
	<u>FOOD, FRUIT & VEGETABLES</u>							
1140	Canned Tomatoes	Tinned tomatoes/brand/400g	0.71	1.97	1.83	0.66	1.79	0.65
1150	Onions and Chives	Onions/sea feight/1kg	0.34	3.95	3.39	0.29	3.34	0.29
1160	Potatoes	Potatoes/sea freight/1kg	0.14	3.90	3.25	0.12	3.25	0.12
	<u>DAIRY</u>							
1170	Butter	Imported butter/brand/250g	1.43	2.65	2.90	1.56	2.85	1.54
1180	Milk powder	Milk powder/brand/1kg	0.99	12.87	11.24	0.86	11.20	0.86
1190	Cooking Oil	Cooking oil/brand/750ml	0.52	4.57	5.07	0.58	4.90	0.56
1200	Fresh milk	Fresh milk/full cream/1litre	0.42	2.63	2.93	0.47	2.93	0.47
1210	Eggs	Imported Eggs/dozen/600g	0.29	5.47	5.68	0.30	5.68	0.30

				01 AUG '08	JUNE'11		JULY'11	
REF-NO	ITEM NAME	DESCRIPTION	WEIGHT	BASE PRICE	PRICE	INDEX	PRICE	INDEX
	<u>OTHER FOODS</u>							
1220	Soft drink	Soft drinks/brand/1can/375ml	0.96	1.03	1.09	1.02	1.05	0.98
1230	Sugar	Imported sugar/white/brand/2kg	4.60	4.10	4.28	4.80	4.37	4.90
1240	Soya sauce	Soya sauce/light/500ml	0.58	2.90	2.98	0.60	3.06	0.61
1250	Tea	Imported tea/100 bags/180g	0.49	4.60	3.41	0.36	3.28	0.35
1260	Coffee	Imported coffee/brand/100g	0.45	7.42	5.06	0.31	5.10	0.31
1270	Baby food	Baby food/heinz/vanilla custard/110g	0.44	1.27	1.46	0.51	1.46	0.51
	<u>TAKE AWAY</u>							
1280	Plate of food/Take away	Plate of food/take away	2.20	3.77	3.38	1.97	3.38	1.97
1290	Dinner out	Dinner for two/Formal/Reynaldo	0.36	22.50	22.50	0.36	22.50	0.36
	Sub total :	(Food group)	55.71			54.99		54.81
	<u>ALCOHOL & TOBACCO</u>							
1410	Beer	Beer/brand/1can/375ml	4.27	2.00	1.65	3.52	1.65	3.52
1420	Cigarettes	Cigarettes/Alpine brand/1packet/25 sticks	12.20	5.50	5.50	12.20	5.50	12.20
	Sub total :	(Alcohol & Tobacco group)	16.47			15.72		15.72
	<u>CLOTHING</u>							
1510	Nappies	Nappies/plastic/brand/size medium/20 per pack	0.81	17.04	13.51	0.64	13.58	0.65
1520	Mumu	Casual/imported formal dress/mumu size large	0.85	15.60	30.00	1.63	30.00	1.63
1530	T/Shirt	Imported T-shirt/duel sex/size large	0.37	10.65	12.50	0.43	12.50	0.43
	<u>FOOTWEAR</u>							
1540	Footwear	Shoes/womens slip-ons/size 9	0.14	3.00	15.00	0.70	15.00	0.70
	Sub total :	(Clothing group)	2.17			3.41		3.41
	<u>RENT</u>							
1610	Rent for dwelling per month	Rent unit/MQ/Location	0.23	75.00	75.00	0.23	75.00	0.23

				01 AUG '08	JUNE'11		JULY'11	
REF-NO	ITEM NAME	DESCRIPTION	WEIGHT	BASE PRICE	PRICE	INDEX	PRICE	INDEX
	<u>MAINTENANCE</u>							
1620	Ceramic tiles	Tiles/plastic tiles/size square cm/1case()	1.54	68.80	46.50	1.04	46.50	1.04
1630	Cement	Cement/bag/40 kg	0.76	20.60	23.00	0.85	23.00	0.85
1640	Paint	Paint/brand/enamel/4litre	0.51	62.63	60.00	0.49	60.00	0.49
1650	Timber	Timber/treated pine/4x2/4.8metres	0.44	47.00	32.00	0.30	32.00	0.30
	Sub total :	(Housing group)	3.48			2.91		2.91
	<u>BILLS</u>							
1710	Electricity bill	Electricity bill/kilowatt per hour	1.60	0.30	0.15	0.80	0.15	0.80
1720	Water bill	Water Bill/per 10 litre	0.35	0.03	0.03	0.35	0.03	0.35
	<u>APPLIANCES</u>							
1730	Freezer	Freezer	1.12	750.00	1016.25	1.52	1016.25	1.52
1740	Refridgerator	Refridgerator	0.73	1635.00	1527.50	0.68	1527.50	0.68
1750	Television	Television/brand/15 inch	0.71	369.50	448.67	0.86	448.67	0.86
1760	Washing machine	Washing machine/brand/5kg capacity	0.68	1195.00	993.17	0.57	993.17	0.57
	<u>FURNITURE</u>							
1770	Light fitting	Light fitting/brand/60watt globe	0.28	2.50	1.94	0.22	1.94	0.22
1780	Beds	Beds/single/foam-sponge	0.25	400.00	425.00	0.27	425.00	0.27
	<u>SUPPLIES</u>							
1790	Toilet paper	Toilet Paper/brand/1000 sheets	1.23	2.15	2.27	1.30	2.27	1.30
1800	Washing soap powder	Washing soap powder/brand/500g	0.71	5.60	4.76	0.60	4.95	0.63
1810	Mosquito coil	Mosquito coil/1packet/10coils/120g	0.69	1.14	1.24	0.75	1.22	0.74
1820	Dishwashing liquid	Dishwashing liquid/brand/500ml	0.30	3.48	2.33	0.20	2.33	0.20
1830	Batteries	Batteries/brand/1pack/2 x size D	0.17	2.52	5.43	0.37	5.43	0.37
	Sub total :	(Household Operations group)	8.82			8.48		8.49

				01 AUG '08	JUNE'11		JULY'11	
REF-NO	ITEM NAME	DESCRIPTION	WEIGHT	BASE PRICE	PRICE	INDEX	PRICE	INDEX
	<u>TRANSPORT & COMMUNICATIONS</u>							
1910	Petrol	Petrol/1 litre	5.34	2.00	1.63	4.36	1.63	4.36
1920	Airfair	Return ticket/Australia	2.88	1468.00	1258.00	2.47	1258.00	2.47
1930	Oil	Oil/brand/multi-grade/1litre	0.48	14.37	10.31	0.34	10.02	0.33
1940	Deisel	Diesel/1 litre	0.43	2.05	1.62	0.34	1.62	0.34
1950	Departure tax	Departure Tax	0.22	50.00	50.00	0.22	50.00	0.22
1960	Other communication	International call card to Australia/rate per hour	0.12	6.00	6.00	0.12	6.00	0.12
	Sub total :	(Transport & Communication group)	9.47			7.85		7.84
	<u>HEALTH</u>							
2010	Hospital charges	Hospital charges/Minor surgery	0.35	20.00	20.00	0.35	20.00	0.35
2020	Doctors/dentists fees	Doctors/dentist/Consultation fees	0.33	10.00	10.00	0.33	10.00	0.33
	<u>EDUCATION</u>							
2030	School clothing	School clothing/Shirts/shorts	0.34	10.00	10.00	0.34	10.00	0.34
2040	Books & schooling supplies	Exercise Books/brand/64pages	0.16	0.85	1.00	0.19	1.00	0.19
	<u>RECREATION</u>							
2050	Records, Cassettes,CD's	Blank CDR/brand/single/700mb	0.64	1.25	1.47	0.75	1.47	0.75
2060	Fishing equipment and supplies	Fishing hook/brand/Nickel coated/size 7/0	0.34	0.20	0.50	0.85	0.50	0.85
2070	DVD hire	DVD hire	0.16	2.00	2.00	0.16	2.00	0.16
	<u>PERSONAL PRODUCTS</u>							
2080	Bathing soap (liquid/bar)	Soap/bar/brand/100g	0.60	0.89	0.88	0.59	0.90	0.61
2090	Toothpaste	Toothpaste/brand/90g	0.17	2.63	2.50	0.16	2.50	0.16
2100	Deodorant, body spray	Deodorant/brand/body spray/100ml	0.13	3.90	4.94	0.16	4.95	0.17
	<u>MISCELANEOUS</u>							
2110	Overseas, Newspaper, Jounals	Magazine/PIM	0.36	4.95	5.00	0.36	5.00	0.36
2120	Dog food	Dog food/canned/700g	0.30	1.95	2.35	0.36	2.45	0.38
	Sub total :	(Miscellaneous group)	3.88			4.61		4.64
	GRAND TOTAL:	(all groups)	100.00			97.97		97.82

SUMMARY SHEET

GROUP	JUNE'11 INDEX	JULY'11 INDEX	DIFFERENCE	% INCREASE (+) DECREASE (-)
FOOD	54.99	54.81	-0.19	-0.34
ALCOHOL & TOBACCO	15.72	15.72	0.00	0.00
CLOTHING	3.41	3.41	0.00	0.09
HOUSING	2.91	2.91	0.00	0.00
HOUSEHOLD OPERATIONS	8.48	8.49	0.01	0.11
TRANSPORT & COMMUNICATION	7.85	7.84	-0.01	-0.12
MISCELLANEOUS	4.61	4.64	0.03	0.71
TOTAL	97.97	97.82	-0.15	-0.15

				01 AUG '08	JULY'10		JULY'11	
REF-NO	ITEM NAME	DESCRIPTION	WEIGHT	BASE PRICE	PRICE	INDEX	PRICE	INDEX
	<u>RICE & OTHER CEREALS</u>							
1010	Rice	Imported rice/sunwhite/bag/25kg	15.48	41.00	41.40	15.63	41.50	15.67
1020	Bread (sliced loaf)	Bread//white/local/sliced loaf	3.65	1.75	1.93	4.03	1.93	4.03
1030	Noodles	Noodles/sachet/85g	1.68	0.53	0.66	2.09	0.68	2.17
1040	Other bread and Biscuits	Dry biscuits/brand/250g	0.54	2.10	2.94	0.76	3.06	0.79
1050	Self raising	Imported Flour/self raising/1kg	0.39	2.50	3.10	0.48	2.94	0.46
	<u>MEAT</u>							
1060	Chicken	Imported Chicken/cuts/2kg	7.99	9.18	7.98	6.95	8.50	7.40
1070	Canned Meat	Tinned beef/corned beef/imperial/326g	3.63	4.53	4.66	3.73	4.67	3.74
1080	Canned Meat	Tinned meat/luncheon/397g	1.69	2.43	1.73	1.21	1.73	1.21
1090	Sausages	Sausages/1pack/pork/1kg	1.07	7.33	4.60	0.67	4.05	0.59
	<u>SEAFOOD</u>							
1100	Fish	Tuna/Skipjack(bonita)/1 kg	2.50	6.00	4.00	1.67	4.00	1.67
1110	Canned Fish	Imported tinned mackerel/brand/425g	0.92	2.55	2.80	1.01	2.60	0.94
1120	Reef fish	Reef fish/1 kg	0.75	8.00	8.00	0.75	8.00	0.75
1130	Canned Fish	Tinned sardines/sardines/425g	0.50	2.35	3.00	0.64	3.03	0.64
	<u>FOOD, FRUIT & VEGETABLES</u>							
1140	Canned Tomatoes	Tinned tomatoes/brand/400g	0.71	1.97	1.74	0.63	1.79	0.65
1150	Onions and Chives	Onions/sea feight/1kg	0.34	3.95	5.44	0.47	3.34	0.29
1160	Potatoes	Potatoes/sea freight/1kg	0.14	3.90	4.50	0.16	3.25	0.12
	<u>DAIRY</u>							
1170	Butter	Imported butter/brand/250g	1.43	2.65	2.95	1.59	2.85	1.54
1180	Milk powder	Milk powder/brand/1kg	0.99	12.87	11.72	0.90	11.20	0.86
1190	Cooking Oil	Cooking oil/brand/750ml	0.52	4.57	5.35	0.61	4.90	0.56
1200	Fresh milk	Fresh milk/full cream/1litre	0.42	2.63	2.80	0.45	2.93	0.47
1210	Eggs	Imported Eggs/dozen/600g	0.29	5.47	6.00	0.32	5.68	0.30

<u>REF-NO</u>	<u>ITEM NAME</u>	<u>DESCRIPTION</u>	<u>WEIGHT</u>	<u>01 AUG '08 BASE PRICE</u>	<u>JULY'10 PRICE</u>	<u>INDEX</u>	<u>JULY'11 PRICE</u>	<u>INDEX</u>
	<u>OTHER FOODS</u>							
1220	Soft drink	Soft drinks//brand/1can/375ml	0.96	1.03	1.15	1.07	1.05	0.98
1230	Sugar	Imported sugar/white/brand/2kg	4.60	4.10	4.15	4.66	4.37	4.90
1240	Soya sauce	Soya sauce/light/500ml	0.58	2.90	2.95	0.59	3.06	0.61
1250	Tea	Imported tea/100 bags/180g	0.49	4.60	3.77	0.40	3.28	0.35
1260	Coffee	Imported coffee/brand/100g	0.45	7.42	4.34	0.26	5.10	0.31
1270	Baby food	Baby food/heinz/vanilla custard/110g	0.44	1.27	1.48	0.51	1.46	0.51
	<u>TAKE AWAY</u>							
1280	Plate of food/Take away	Plate of food/take away	2.20	3.77	3.38	1.97	3.38	1.97
1290	Dinner out	Dinner for two/Formal/Reynaldo	0.36	22.50	22.50	0.36	22.50	0.36
	Sub total :	(Food group)	55.71			54.56		54.81
	<u>ALCOHOL & TOBACCO</u>							
1410	Beer	Beer/brand/1can/375ml	4.27	2.00	1.65	3.52	1.65	3.52
1420	Cigarettes	Cigarettes/Alpine brand/1packet/25 sticks	12.20	5.50	6.33	14.03	5.50	12.20
	Sub total :	(Alcohol & Tobacco group)	16.47			17.55		15.72
	<u>CLOTHING</u>							
1510	Nappies	Nappies/plastic/brand/size medium/20 per pack	0.81	17.04	13.70	0.65	13.58	0.65
1520	Mumu	Casual/imported formal dress/mumu size large	0.85	15.60	30.00	1.63	30.00	1.63
1530	T/Shirt	Imported T-shirt/duel sex/size large	0.37	10.65	12.50	0.43	12.50	0.43
	<u>FOOTWEAR</u>							
1540	Footwear	Shoes/womens slip-ons/size 9	0.14	3.00	14.35	0.67	15.00	0.70
	Sub total :	(Clothing group)	2.17			3.39	0.00	3.41
	<u>RENT</u>							
1610	Rent for dwelling per month	Rent unit/MQ/Location	0.23	75.00	75.00	0.23	75.00	0.23

				01 AUG '08	JULY'10		JULY'11	
<u>REF-NO</u>	<u>ITEM NAME</u>	<u>DESCRIPTION</u>	<u>WEIGHT</u>	<u>BASE PRICE</u>	<u>PRICE</u>	<u>INDEX</u>	<u>PRICE</u>	<u>INDEX</u>
	<u>MAINTENANCE</u>							
1620	Ceramic tiles	Tiles/plastic tiles/size square cm/1case()	1.54	68.80	46.50	1.04	46.50	1.04
1630	Cement	Cement/bag/40 kg	0.76	20.60	23.00	0.85	23.00	0.85
1640	Paint	Paint/brand/enamel/4litre	0.51	62.63	59.11	0.48	60.00	0.49
1650	Timber	Timber/treated pine/4x2/metres	0.44	47.00	38.00	0.36	32.00	0.30
	Sub total :	(Housing group)	3.48			2.96		2.91
	<u>BILLS</u>							
1710	Electricity bill	Electricity bill/kilowatt per hour	1.60	0.30	0.10	0.53	0.15	0.80
1720	Water bill	Water Bill/per 10 litre	0.35	0.03	0.03	0.35	0.03	0.35
	<u>APPLIANCES</u>							
1730	Freezer	Freezer	1.12	750.00	1016.25	1.52	1016.25	1.52
1740	Refridgerator	Refridgerator	0.73	1635.00	1527.50	0.68	1527.50	0.68
1750	Television	Television/brand/15 inch	0.71	369.50	448.67	0.86	448.67	0.86
1760	Washing machine	Washing machine/brand/5kg capacity	0.68	1195.00	993.17	0.57	993.17	0.57
	<u>FURNITURE</u>							
1770	Light fitting	Light fitting/brand/60watt globe	0.28	2.50	2.03	0.23	1.94	0.22
1780	Beds	Beds/single/foam-sponge	0.25	400.00	425.00	0.27	425.00	0.27
	<u>SUPPLIES</u>							
1790	Toilet paper	Toilet Paper/brand/1000 sheets	1.23	2.15	2.36	1.35	2.27	1.30
1800	Washing soap powder	Washing soap powder/brand/500g	0.71	5.60	4.72	0.60	4.95	0.63
1810	Mosquito coil	Mosquito coil/1packet/10coils/120g	0.69	1.14	1.23	0.75	1.22	0.74
1820	Dishwashing liquid	Dishwashing liquid/brand/500ml	0.30	3.48	2.40	0.21	2.33	0.20
1830	Batteries	Batteries/brand/1pack/2 x size D	0.17	2.52	5.43	0.37	5.43	0.37
	Sub total :	(Household Operations group)	8.82			8.27		8.49

				01 AUG '08	JULY'10		JULY'11	
<u>REF-NO</u>	<u>ITEM NAME</u>	<u>DESCRIPTION</u>	<u>WEIGHT</u>	<u>BASE PRICE</u>	<u>PRICE</u>	<u>INDEX</u>	<u>PRICE</u>	<u>INDEX</u>
	<u>TRANSPORT & COMMUNICATIONS</u>							
1910	Petrol	Petrol/1 litre	5.34	2.00	1.56	4.17	1.63	4.36
1920	Airfair	Return ticket/Australia	2.88	1468.00	1258.00	2.47	1258.00	2.47
1930	Oil	Oil/brand/multi-grade/1litre	0.48	14.37	8.48	0.28	10.02	0.33
1940	Deisel	Diesel/1 litre	0.43	2.05	1.54	0.32	1.62	0.34
1950	Departure tax	Departure Tax	0.22	50.00	50.00	0.22	50.00	0.22
1960	Other communication	International call card to Australia/rate per hour	0.12	6.00	6.00	0.12	6.00	0.12
	Sub total :	(Transport & Communication group)	9.47			7.58		7.84
	<u>HEALTH</u>							
2010	Hospital charges	Hospital charges/Minor surgery	0.35	20.00	20.00	0.35	20.00	0.35
2020	Doctors/dentists fees	Doctors/dentist/Consultation fees	0.33	10.00	10.00	0.33	10.00	0.33
	<u>EDUCATION</u>							
2030	School clothing	School clothing/Shirts/shorts	0.34	10.00	10.00	0.34	10.00	0.34
2040	Books & schooling supplies	Exercise Books/brand/64pages	0.16	0.85	1.00	0.19	1.00	0.19
	<u>RECREATION</u>							
2050	Records, Cassettes,CD's	Blank CDR/brand/single/700mb	0.64	1.25	1.47	0.75	1.47	0.75
2060	Fishing equipment and supplies	Fishing hook//brand/Nickel coated/size 7/0	0.34	0.20	0.50	0.85	0.50	0.85
2070	DVD hire	DVD hire	0.16	2.00	2.00	0.16	2.00	0.16
	<u>PERSONAL PRODUCTS</u>							
2080	Bathing soap (liquid/bar)	Soap/bar/brand/100g	0.60	0.89	1.01	0.68	0.90	0.61
2090	Toothpaste	Toothpaste/brand/90g	0.17	2.63	2.50	0.16	2.50	0.16
2100	Deodorant, body spray	Deodorant/brand/body spray/100ml	0.13	3.90	4.88	0.16	4.95	0.17
	<u>MISCELANEOUS</u>							
2110	Overseas, Newspaper, Jounals	Magazine/PIM	0.36	4.95	5.00	0.36	5.00	0.36
2120	Dog food	Dog food/canned/700g	0.30	1.95	2.20	0.34	2.45	0.38
	Sub total :	(Miscellaneous group)	3.88			4.68		4.64
	GRAND TOTAL:	(all groups)	100.00			98.98		97.82

SUMMARY SHEET

GROUP	JULY'10 INDEX	JULY'11 INDEX	DIFFERENCE	% INCREASE (+) DECREASE (-)
FOOD	54.56	54.81	0.25	0.45
ALCOHOL & TOBACCO	17.55	15.72	-1.83	-10.43
CLOTHING	3.39	3.41	0.02	0.72
HOUSING	2.96	2.91	-0.05	-1.65
HOUSEHOLD OPERATIONS	8.27	8.49	0.22	2.63
TRANSPORT & COMMUNICATION	7.58	7.84	0.26	3.49
MISCELLANEOUS	4.68	4.64	-0.03	-0.69
TOTAL	98.98	97.82	-1.16	-1.17

Technical Notes

Brief Explanation of the CPI

The Consumer Price Index (CPI) is a measure of the average change in prices over time of goods and services purchased by households. The basis of goods and services included in the CPI market basket is subsequently the basis for analysis of consumer spending from the Household Income & Expenditure Survey (HIES) carried out by the Bureau of Statistics in 2006. The bureau is mandated to publish monthly CPIs.

The CPIs are based on prices of food, clothing, beverages, fuels, transportation fares, household supplies and other goods and services that people buy for day-to-day living. Prices are collected each month across the island from 6 retail establishments, and other service providers associated within the CPI market basket. Prices of most goods and services are obtained through personal visits by Statistics staff and additional publications such as the Fuel Watch and public notices that reflect the goods and services within the CPI market basket. In calculating the index, price changes for the various items in each location are averaged together with weights that represent their importance. Local data are then combined to obtain a national average.

The index measures price change from a designated reference date. For the CPI, the reference base is 2008= 100.00. An increase of 16.5 percent from the reference base, for example, is shown as 116.5. This change also can be expressed in dollars as follows: the price of a base-period market basket of goods and services in the CPI has risen from \$10 in 2008 to \$11.65. For further details, contact the government operator at 557 3133 and ask for the Bureau of Statistics or extension 255.

Calculating index changes

Movements of the indexes from one month to another usually are expressed as percent changes, rather than changes in index points, because index point changes are affected by the level of the index in relation to its base period, whereas percent changes are not. The example shown in the box on this page illustrates the computation of index point and percent changes.

Percent changes within the CPI publication reflects for (1) monthly, (2) annual and (3) historical trends since base period are computed according to the standard formula for compound growth rates. These data indicate what the percent change would be if the current rate were maintained for the 3 periods specified in the latter.

Index point change		Visual calculation
CPI	202.416 (a)	(b) - (a) = (c)
Less previous index	201.8 (b)	
Equals index point change	0.616 (c)	
Percent change		
Index point difference	0.616	(c) ÷ (b) = (e)
Divided by the previous index	201.8 (d)	
Equals	0.003 (e)	
Results multiplied by one hundred	0.003 x 100	(e) x 100 = (f)
Equals percent change	0.3 (f)	