

**CONSUMER PRICE INDEX  
MONTHLY REPORT**

**JANUARY 2011**



***PREPARED BY:***

**BUREAU OF STATISTICS  
DEPARTMENT OF FINANCE**

**13.05.11**

# THE CONSUMER PRICE INDEX

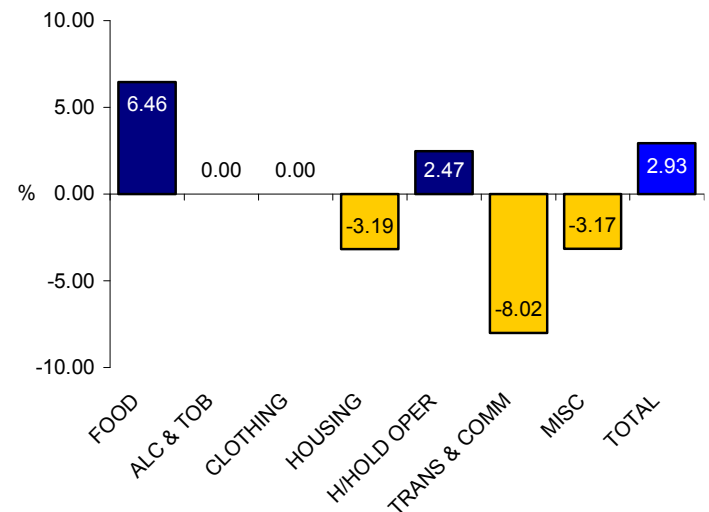
## 1. Monthly Change

The CPI for the month of January 2011 is reported at 100.69 which show that the index has increased by 2.93 percent from the previous month of December 2010. The Table below validates the variation of index between the two observation periods and enclosed in Appendix 1 is the Monthly CPI basket of goods depicting the index movement for each observation item.

**Table**                      **Change in Monthly Group Indices**

GROUP	DEC '10 INDEX	JAN '11 INDEX	DIFF	% INC (+) DEC (-)
FOOD	54.53	58.05	3.52	6.46
ALCOHOL & TOBACCO	16.67	16.67	0.00	0.00
CLOTHING	3.39	3.39	0.00	0.00
HOUSING	2.92	2.82	-0.09	-3.19
HOUSEHOLD OPERATION	8.08	8.28	0.20	2.47
TRANSPORT & COMMUNICATION	7.64	7.03	-0.61	-8.02
MISCELLANEOUS	4.60	4.45	-0.15	-3.17
<b>TOTAL</b>	<b>97.82</b>	<b>100.69</b>	<b>2.87</b>	<b>2.93</b>

**Chart 1.**                      **% change for January 2011**



Note: Discrepancy of numbers is due to calculations and rounding.

### 1.1 Monthly Observation

The Consumer Price Index or cost of goods and services has increased as a result of increases from two of the seven groups for January following consecutive decreases in October, November and December of 2010. The two groups in question are--Food and Household operations--have contributed to the increase.

Heading the growth is essentially the important Food group which reported an increase of 6.46 percent from the previous month following a decrease of -0.58 percent in December. Within the Food group, the rising index and the most important item out of all the items in the CPI basket of goods and services is the surge of rice index with a growth of 17 percent. The other most noticeable increases that have influenced the advancement of food are increases for a kilo of fresh tuna, tinned tomatoes, potatoes, onions, sugar and coffee.

The last index recording an increase for this period is the Household operations with an increase of 2.47 percent following an increase from the preceding month of December. Within Household operations, the increased index for single beds, dishwashing liquid and disposable batteries have contributed to the advance while the remaining indexes remained unchanged.

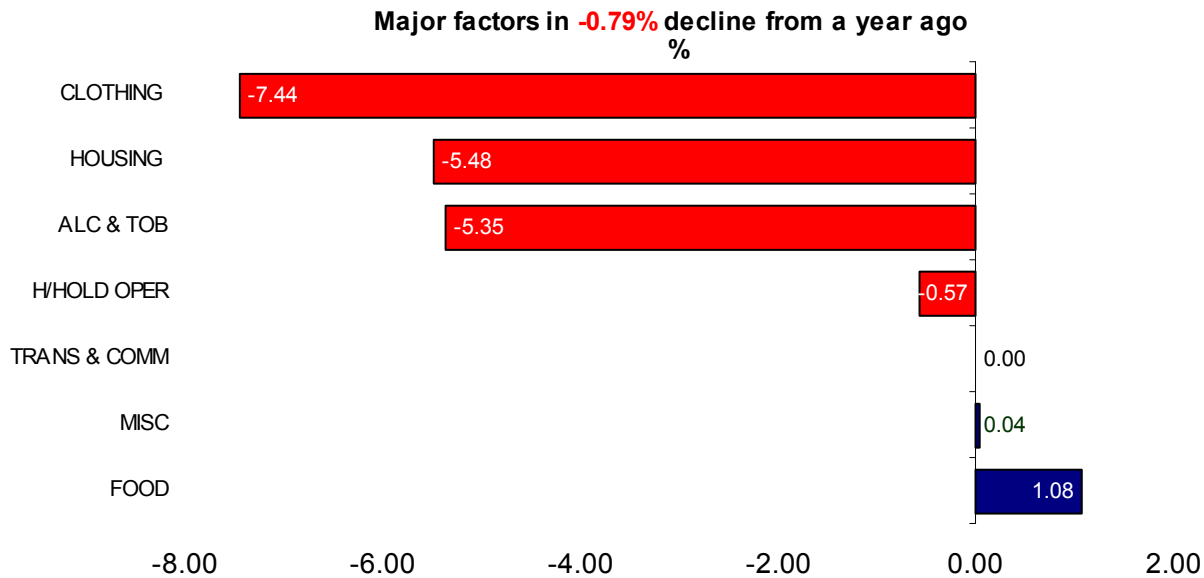
To offset the index growth, the falling index for Transport & Communications, Housing and Miscellaneous each with declines of 8.02, 3.19 and 3.17 respectively. Within the Transport & Communications, the declining indexes for oil of 10 percent and petrol of 1.6 percent have influenced the drop. In Housing the declining index for timber and paint have affected the small decrease for the group. Lastly, Miscellaneous reported the smallest decrease and is affected by fluctuations of a blank CD, toothpaste and bathing soap.

The index for Alcohol & Tobacco and Clothing group remains stable.

## 2. Annual Change

On an annual basis it is evident that the annualised change has reported an insignificant drop of **0.79** percent as clearly illustrated in Chart 2 below. A majority of the CPI groups such as--Clothing, Housing, Alcohol & Tobacco and Household operations --have all recorded decreases.

**Chart 2. Annualised % change since January 2010**



### 2.1 Annual Observation<sup>1</sup>

In the annualised observation the decrease for goods and services is influenced by four of the seven groups.

Leading the annual deflation is the Clothing group with a significant decrease of **7.44** percent as a result of decline for ladies mumu. This is followed by the Housing group with **5.48** percent and is mainly affected by drops of timber as well as small reduction for the index of paint. Similarly, the Alcohol & Tobacco group recorded a **5.35** percent decline and it's influenced by the sole decrease of the cigarette index. Last of all, Household operations group reported the smallest yet influential decrease compared to a year ago with **0.57** percent and is mainly attributed to the reduced price for toilet paper.

To offset the deflation, two groups recorded increases from a year ago namely Food and Miscellaneous with growths of **1.08** and **0.04** percent respectively.

Within the Food group the fluctuations is traced to increased prices for SAO biscuits, self raising flour, 2kg chicken, onions and potatoes, fresh and powdered milk, sugar, soya sauce and lastly baby food. Finally, the small increase for the price of bathing soap as solely contributed to the slight growth of the Miscellaneous group.

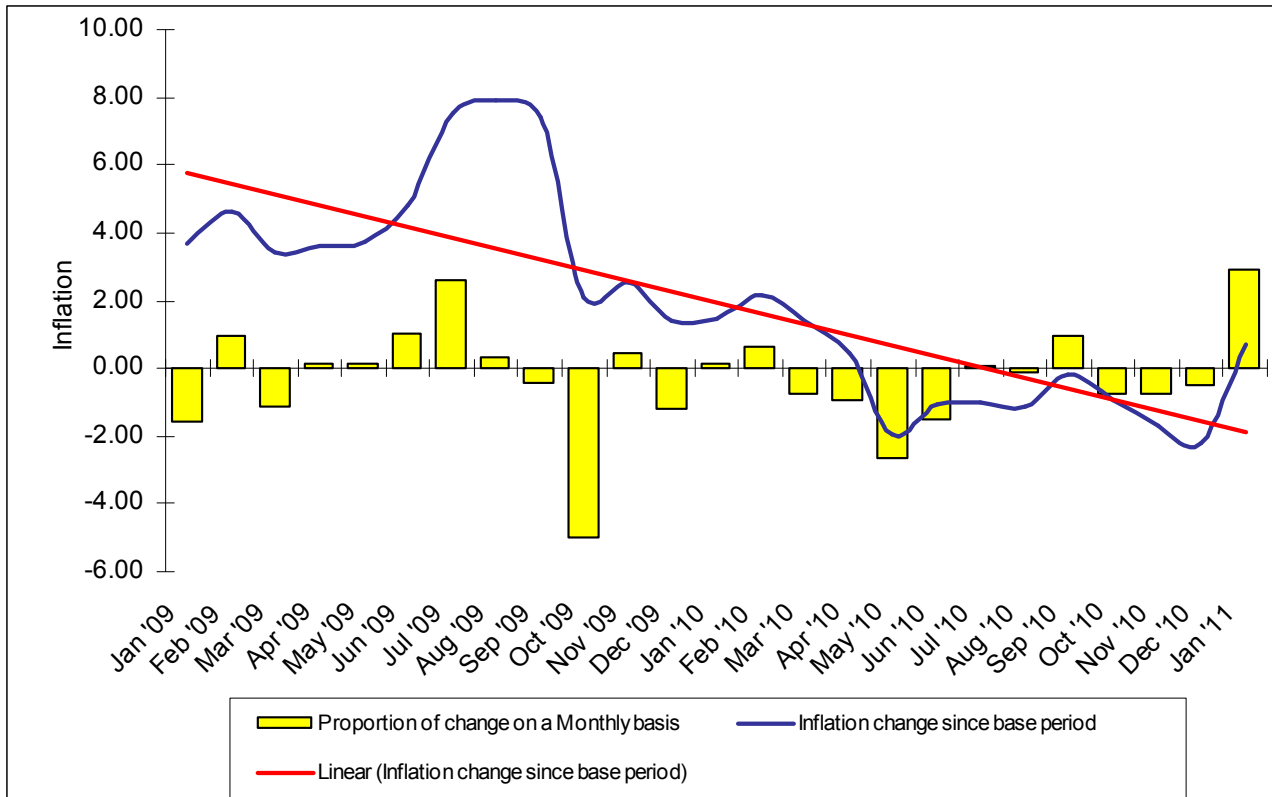
Transport and Communications index remained stable in the past 12 months.

<sup>1</sup> Detailed variations of annual CPI refer to basket of goods Appendix 2.

### 3. All Groups CPI Series

Based on the All Groups Monthly index, the January 2011 has reported growth of **2.93** percent subsequently after repetitive decreases since October 2010. Under similar circumstances the changes since base period also reflect similar trends with constant decreases since October 2010 and a slight increase for the current period with growth of **0.69** percent.

**Chart 3. All Groups CPI Monthly variables and Inflation trend since base period**



#### 3.1 Historical Movement

Chart 3 shows the two CPI’s historical trends, with the bar graphs representing the monthly fluctuations and the line graph depicting the variation since base period.

It is apparent that the monthly fluctuations over the observable periods have been volatile with recent recurring decreases in October to December 2010 with **0.76**, **0.76** and **0.49** percent respectively. Subsequently with a sharp increase for this period January 2011 of **2.96** percent which is mostly accounted to the increase of **6.46** percent for the Food index.

For the inflation measured since base period it is evident that after prolong period of positive trend deflation has started in May 2010 with **1.94** and remained in negative trend for the following eight months up till December 2010. For this month January 2011 period the index rose again and into positive form and once again is mainly accounted for the growth of the Food index.

#### **4. Conclusion**

Based on the latter analysis the growth of the Food group has made a significant impact towards the domestic monthly, annual and historical trends. Sharp rises of some key commodities within the Food group have shifted deceleration trend. In effect, there is no evidence of policy response towards this rise with existing imports tariff remaining stable since the revision of the tariff schedule in 2010-11 fiscal year.

Though the sharp rise in domestic prices is supported by surges of global food prices which has peaked in January 2011 and is mainly attributed by rising prices of most agriculture commodities since mid 2010. Factors such as supply constraints caused by adverse weather, natural disaster and currency volatility have been the root cause.

				01 AUG '08	DEC '10		JAN '11	
REF-NO	ITEM NAME	DESCRIPTION	WEIGHT	BASE PRICE	PRICE	INDEX	PRICE	INDEX
	<u>RICE &amp; OTHER CEREALS</u>							
1010	Rice	Imported rice/sunwhite/bag/25kg	15.48	41.00	41.00	15.48	48.00	18.12
1020	Bread (sliced loaf)	Bread//white/local/sliced loaf	3.65	1.75	1.93	4.03	1.93	4.03
1030	Noodles	Noodles/sachet/85g	1.68	0.53	0.67	2.11	0.65	2.06
1040	Other bread and Biscuits	Dry biscuits/brand/250g	0.54	2.10	3.10	0.80	3.14	0.81
1050	Self raising	Imported Flour/self raising/1kg	0.39	2.50	3.72	0.58	3.48	0.54
	<u>MEAT</u>							
1060	Chicken	Imported Chicken/cuts/2kg	7.99	9.18	8.16	7.10	8.10	7.05
1070	Canned Meat	Tinned beef/corned beef/imperial/326g	3.63	4.53	4.77	3.82	4.67	3.74
1080	Canned Meat	Tinned meat/luncheon/397g	1.69	2.43	1.73	1.21	1.73	1.21
1090	Sausages	Sausages/1pack/pork/1kg	1.07	7.33	4.05	0.59	4.05	0.59
	<u>SEAFOOD</u>							
1100	Fish	Tuna/Skipjack(bonita)/1 kg	2.50	6.00	4.00	1.67	6.00	2.50
1110	Canned Fish	Imported tinned mackerel/brand/425g	0.92	2.55	2.73	0.98	2.70	0.97
1120	Reef fish	Reef fish/1 kg	0.75	8.00	8.00	0.75	8.00	0.75
1130	Canned Fish	Tinned sardines/sardines/425g	0.50	2.35	3.25	0.69	3.25	0.69
	<u>FOOD, FRUIT &amp; VEGETABLES</u>							
1140	Canned Tomatoes	Tinned tomatoes/brand/400g	0.71	1.97	1.75	0.63	2.06	0.74
1150	Onions and Chives	Onions/sea feight/1kg	0.34	3.95	4.75	0.41	6.28	0.54
1160	Potatoes	Potatoes/sea freight/1kg	0.14	3.90	4.50	0.16	6.55	0.24
	<u>DAIRY</u>							
1170	Butter	Imported butter/brand/250g	1.43	2.65	2.95	1.59	2.62	1.41
1180	Milk powder	Milk powder/brand/1kg	0.99	12.87	11.97	0.92	11.72	0.90
1190	Cooking Oil	Cooking oil/brand/750ml	0.52	4.57	4.98	0.57	4.90	0.56
1200	Fresh milk	Fresh milk/full cream/1litre	0.42	2.63	2.85	0.46	2.85	0.46
1210	Eggs	Imported Eggs/dozen/600g	0.29	5.47	6.18	0.33	5.72	0.30

REF-NO	ITEM NAME	DESCRIPTION	WEIGHT	01 AUG '08 BASE PRICE	DEC '10 PRICE	INDEX	JAN '11 PRICE	INDEX
	<u>OTHER FOODS</u>							
1220	Soft drink	Soft drinks/brand/1can/375ml	0.96	1.03	1.00	0.93	1.10	1.03
1230	Sugar	Imported sugar/white/brand/2kg	4.60	4.10	4.10	4.60	4.22	4.73
1240	Soya sauce	Soya sauce/light/500ml	0.58	2.90	3.08	0.62	3.02	0.60
1250	Tea	Imported tea/100 bags/180g	0.49	4.60	3.68	0.39	3.30	0.35
1260	Coffee	Imported coffee/brand/100g	0.45	7.42	4.38	0.27	4.58	0.28
1270	Baby food	Baby food/heinz/vanilla custard/110g	0.44	1.27	1.48	0.51	1.48	0.51
	<u>TAKE AWAY</u>							
1280	Plate of food/Take away	Plate of food/take away	2.20	3.77	3.38	1.97	3.38	1.97
1290	Dinner out	Dinner for two/Formal/Reynaldo	0.36	22.50	22.50	0.36	22.50	0.36
	<b>Sub total :</b>	<b>(Food group)</b>	<b>55.71</b>			<b>54.53</b>		<b>58.05</b>
	<u>ALCOHOL &amp; TOBACCO</u>							
1410	Beer	Beer/brand/1can/375ml	4.27	2.00	1.65	3.52	1.65	3.52
1420	Cigarettes	Cigarettes/Alpine brand/1packet/25 sticks	12.20	5.50	5.93	13.14	5.93	13.14
	<b>Sub total :</b>	<b>(Alcohol &amp; Tobacco group)</b>	<b>16.47</b>			<b>16.67</b>		<b>16.67</b>
	<u>CLOTHING</u>							
1510	Nappies	Nappies/plastic/brand/size medium/20 per pack	0.81	17.04	13.70	0.65	13.70	0.65
1520	Mumu	Casual/imported formal dress/mumu size large	0.85	15.60	30.00	1.63	30.00	1.63
1530	T/Shirt	Imported T-shirt/duel sex/size large	0.37	10.65	12.50	0.43	12.50	0.43
	<u>FOOTWEAR</u>							
1540	Footwear	Shoes/womens slip-ons/size 9	0.14	3.00	14.35	0.67	14.35	0.67
	<b>Sub total :</b>	<b>(Clothing group)</b>	<b>2.17</b>			<b>3.39</b>		<b>3.39</b>
	<u>RENT</u>							
1610	Rent for dwelling per month	Rent unit/MQ/Location	0.23	75.00	75.00	0.23	75.00	0.23

				01 AUG '08	DEC '10		JAN '11	
REF-NO	ITEM NAME	DESCRIPTION	WEIGHT	BASE PRICE	PRICE	INDEX	PRICE	INDEX
	<u>MAINTENANCE</u>							
1620	Ceramic tiles	Tiles/plastic tiles/size square cm/1case()	1.54	68.80	46.50	1.04	46.50	1.04
1630	Cement	Cement/bag/40 kg	0.76	20.60	23.00	0.85	23.00	0.85
1640	Paint	Paint/brand/enamel/4litre	0.51	62.63	64.67	0.53	59.00	0.48
1650	Timber	Timber/treated pine/4x2/4.8metres	0.44	47.00	29.00	0.27	24.00	0.22
	<b>Sub total :</b>	<b>(Housing group)</b>	<b>3.48</b>			<b>2.92</b>		<b>2.82</b>
	<u>BILLS</u>							
1710	Electricity bill	Electricity bill/kilowatt per hour	1.60	0.30	0.10	0.53	0.10	0.53
1720	Water bill	Water Bill/per 10 litre	0.35	0.03	0.03	0.35	0.03	0.35
	<u>APPLIANCES</u>							
1730	Freezer	Freezer	1.12	750.00	1016.25	1.52	1016.25	1.52
1740	Refridgerator	Refridgerator	0.73	1635.00	1527.50	0.68	1527.50	0.68
1750	Television	Television/brand/15 inch	0.71	369.50	448.67	0.86	448.67	0.86
1760	Washing machine	Washing machine/brand/5kg capacity	0.68	1195.00	993.17	0.57	993.17	0.57
	<u>FURNITURE</u>							
1770	Light fitting	Light fitting/brand/60watt globe	0.28	2.50	2.03	0.23	1.94	0.22
1780	Beds	Beds/single/foam-sponge	0.25	400.00	237.50	0.15	425.00	0.27
	<u>SUPPLIES</u>							
1790	Toilet paper	Toilet Paper/brand/1000 sheets	1.23	2.15	2.23	1.28	2.25	1.29
1800	Washing soap powder	Washing soap powder/brand/500g	0.71	5.60	4.68	0.59	4.67	0.59
1810	Mosquito coil	Mosquito coil/1packet/10coils/120g	0.69	1.14	1.23	0.75	1.23	0.75
1820	Dishwashing liquid	Dishwashing liquid/brand/500ml	0.30	3.48	2.45	0.21	3.37	0.29
1830	Batteries	Batteries/brand/1pack/2 x size D	0.17	2.52	5.43	0.37	5.53	0.37
	<b>Sub total :</b>	<b>(Household Operations group)</b>	<b>8.82</b>			<b>8.08</b>		<b>8.28</b>



## Appendix 1.

Consumer Price Index - Survey period ending January 31<sup>st</sup> 2011

13/05/11

REF-NO	ITEM NAME	DESCRIPTION	WEIGHT	01 AUG '08 BASE PRICE	DEC '10 PRICE	INDEX	JAN '11 PRICE	INDEX
	<u>TRANSPORT &amp; COMMUNICATIONS</u>							
1910	Petrol	Petrol/1 litre	5.34	2.00	1.56	4.17	1.54	4.10
1920	Airfair	Return ticket/Australia	2.88	1468.00	1258.00	2.47	998.00	1.96
1930	Oil	Oil/brand/multi-grade/1litre	0.48	14.37	10.28	0.34	9.22	0.31
1940	Deisel	Diesel/1 litre	0.43	2.05	1.54	0.32	1.54	0.32
1950	Departure tax	Departure Tax	0.22	50.00	50.00	0.22	50.00	0.22
1960	Other communication	International call card to Australia/rate per hour	0.12	6.00	6.00	0.12	6.00	0.12
	<b>Sub total :</b>	<b>(Transport &amp; Communication group)</b>	<b>9.47</b>			<b>7.64</b>		<b>7.03</b>
	<u>HEALTH</u>							
2010	Hospital charges	Hospital charges/Minor surgery	0.35	20.00	20.00	0.35	20.00	0.35
2020	Doctors/dentists fees	Doctors/dentist/Consultation fees	0.33	10.00	10.00	0.33	10.00	0.33
	<u>EDUCATION</u>							
2030	School clothing	School clothing/Shirts/shorts	0.34	10.00	10.00	0.34	10.00	0.34
2040	Books & schooling supplies	Exercise Books/brand/64pages	0.16	0.85	1.00	0.19	1.00	0.19
	<u>RECREATION</u>							
2050	Records, Cassettes,CD's	Blank CDR/brand/single/700mb	0.64	1.25	1.47	0.75	1.20	0.61
2060	Fishing equipment and supplies	Fishing hook/brand/Nickel coated/size 7/0	0.34	0.20	0.50	0.85	0.50	0.85
2070	DVD hire	DVD hire	0.16	2.00	2.00	0.16	2.00	0.16
	<u>PERSONAL PRODUCTS</u>							
2080	Bathing soap (liquid/bar )	Soap/bar/brand/100g	0.60	0.89	0.88	0.60	0.87	0.58
2090	Toothpaste	Toothpaste/brand/90g	0.17	2.63	2.50	0.16	2.40	0.16
2100	Deodorant, body spray	Deodorant/brand/body spray/100ml	0.13	3.90	4.93	0.16	4.95	0.17
	<u>MISCELANEOUS</u>							
2110	Overseas, Newspaper, Jounals	Magazine/PIM	0.36	4.95	5.00	0.36	5.00	0.36
2120	Dog food	Dog food/canned/700g	0.30	1.95	2.25	0.35	2.30	0.35
	<b>Sub total :</b>	<b>(Miscellaneous group)</b>	<b>3.88</b>			<b>4.60</b>		<b>4.45</b>
	<b>GRAND TOTAL:</b>	<b>(all groups)</b>	<b>100.00</b>			<b>97.82</b>		<b>100.69</b>

SUMMARY SHEET

GROUP	DEC '10 INDEX	JAN '11 INDEX	DIFFERENCE	% INCREASE (+) DECREASE (-)
FOOD	54.53	58.05	3.52	6.46
ALCOHOL & TOBACCO	16.67	16.67	0.00	0.00
CLOTHING	3.39	3.39	0.00	0.00
HOUSING	2.92	2.82	-0.09	-3.19
HOUSEHOLD OPERATIONS	8.08	8.28	0.20	2.47
TRANSPORT & COMMUNICATION	7.64	7.03	-0.61	-8.02
MISCELLANEOUS	4.60	4.45	-0.15	-3.17
<b>TOTAL</b>	<b>97.82</b>	<b>100.69</b>	<b>2.87</b>	<b>2.93</b>

REF-NO	ITEM NAME	DESCRIPTION	WEIGHT	01 AUG '08 BASE PRICE	JAN '10 PRICE	INDEX	JAN '11 PRICE	INDEX
	<u>RICE &amp; OTHER CEREALS</u>							
1010	Rice	Imported rice/sunwhite/bag/25kg	15.48	41.00	48.00	18.12	48.00	18.12
1020	Bread (sliced loaf)	Bread//white/local/sliced loaf	3.65	1.75	1.93	4.03	1.93	4.03
1030	Noodles	Noodles/sachet/85g	1.68	0.53	0.65	2.06	0.65	2.06
1040	Other bread and Biscuits	Dry biscuits/brand/250g	0.54	2.10	3.02	0.78	3.14	0.81
1050	Self raising	Imported Flour/self raising/1kg	0.39	2.50	2.78	0.43	3.48	0.54
	<u>MEAT</u>							
1060	Chicken	Imported Chicken/cuts/2kg	7.99	9.18	7.78	6.77	8.10	7.05
1070	Canned Meat	Tinned beef/corned beef/imperial/326g	3.63	4.53	4.67	3.74	4.67	3.74
1080	Canned Meat	Tinned meat/luncheon/397g	1.69	2.43	1.73	1.21	1.73	1.21
1090	Sausages	Sausages/1pack/pork/1kg	1.07	7.33	4.05	0.59	4.05	0.59
	<u>SEAFOOD</u>							
1100	Fish	Tuna/Skipjack(bonita)/1 kg	2.50	6.00	6.00	2.50	6.00	2.50
1110	Canned Fish	Imported tinned mackerel/brand/425g	0.92	2.55	2.70	0.97	2.70	0.97
1120	Reef fish	Reef fish/1 kg	0.75	8.00	8.00	0.75	8.00	0.75
1130	Canned Fish	Tinned sardines/sardines/425g	0.50	2.35	3.25	0.69	3.25	0.69
	<u>FOOD, FRUIT &amp; VEGETABLES</u>							
1140	Canned Tomatoes	Tinned tomatoes/brand/400g	0.71	1.97	2.06	0.74	2.06	0.74
1150	Onions and Chives	Onions/sea feight/1kg	0.34	3.95	5.54	0.48	6.28	0.54
1160	Potatoes	Potatoes/sea freight/1kg	0.14	3.90	4.10	0.15	6.55	0.24
	<u>DAIRY</u>							
1170	Butter	Imported butter/brand/250g	1.43	2.65	2.63	1.42	2.62	1.41
1180	Milk powder	Milk powder/brand/1kg	0.99	12.87	11.52	0.89	11.72	0.90
1190	Cooking Oil	Cooking oil/brand/750ml	0.52	4.57	5.35	0.61	4.90	0.56
1200	Fresh milk	Fresh milk/full cream/1litre	0.42	2.63	2.82	0.45	2.85	0.46
1210	Eggs	Imported Eggs/dozen/600g	0.29	5.47	5.72	0.30	5.72	0.30

REF-NO	ITEM NAME	DESCRIPTION	WEIGHT	01 AUG '08 BASE PRICE	JAN '10 PRICE	INDEX	JAN '11 PRICE	INDEX
	<u>OTHER FOODS</u>							
1220	Soft drink	Soft drinks//brand/1can/375ml	0.96	1.03	1.12	1.04	1.10	1.03
1230	Sugar	Imported sugar/white/brand/2kg	4.60	4.10	4.10	4.60	4.22	4.73
1240	Soya sauce	Soya sauce/light/500ml	0.58	2.90	2.92	0.58	3.02	0.60
1250	Tea	Imported tea/100 bags/180g	0.49	4.60	3.67	0.39	3.30	0.35
1260	Coffee	Imported coffee/brand/100g	0.45	7.42	5.16	0.31	4.58	0.28
1270	Baby food	Baby food/heinz/vanilla custard/110g	0.44	1.27	1.40	0.49	1.48	0.51
	<u>TAKE AWAY</u>							
1280	Plate of food/Take away	Plate of food/take away	2.20	3.77	3.38	1.97	3.38	1.97
1290	Dinner out	Dinner for two/Formal/Reynaldo	0.36	22.50	22.50	0.36	22.50	0.36
	<b>Sub total :</b>	<b>(Food group)</b>	<b>55.71</b>			<b>57.43</b>		<b>58.05</b>
	<u>ALCOHOL &amp; TOBACCO</u>							
1410	Beer	Beer/brand/1can/375ml	4.27	2.00	1.65	3.52	1.65	3.52
1420	Cigarettes	Cigarettes/Alpine brand/1packet/25 sticks	12.20	5.50	6.35	14.09	5.93	13.14
	<b>Sub total :</b>	<b>(Alcohol &amp; Tobacco group)</b>	<b>16.47</b>			<b>17.61</b>		<b>16.67</b>
	<u>CLOTHING</u>							
1510	Nappies	Nappies/plastic/brand/size medium/20 per pack	0.81	17.04	13.70	0.65	13.70	0.65
1520	Mumu	Casual/imported formal dress/mumu size large	0.85	15.60	35.00	1.91	30.00	1.63
1530	T/Shirt	Imported T-shirt/duel sex/size large	0.37	10.65	12.50	0.43	12.50	0.43
	<u>FOOTWEAR</u>							
1540	Footwear	Shoes/womens slip-ons/size 9	0.14	3.00	14.35	0.67	14.35	0.67
	<b>Sub total :</b>	<b>(Clothing group)</b>	<b>2.17</b>			<b>3.66</b>		<b>3.39</b>
	<u>RENT</u>							
1610	Rent for dwelling per month	Rent unit/MQ/Location	0.23	75.00	75.00	0.23	75.00	0.23

REF-NO	ITEM NAME	DESCRIPTION	WEIGHT	01 AUG '08 BASE PRICE	JAN '10 PRICE	INDEX	JAN '11 PRICE	INDEX
	<u>MAINTENANCE</u>							
1620	Ceramic tiles	Tiles/plastic tiles/size square cm/1case()	1.54	68.80	46.50	1.04	46.50	1.04
1630	Cement	Cement/bag/40 kg	0.76	20.60	23.00	0.85	23.00	0.85
1640	Paint	Paint/brand/enamel/4litre	0.51	62.63	63.00	0.51	59.00	0.48
1650	Timber	Timber/treated pine/4x2/metres	0.44	47.00	38.00	0.36	24.00	0.22
	<b>Sub total :</b>	<b>(Housing group)</b>	<b>3.48</b>			<b>2.99</b>		<b>2.82</b>
	<u>BILLS</u>							
1710	Electricity bill	Electricity bill/kilowatt per hour	1.60	0.30	0.10	0.53	0.10	0.53
1720	Water bill	Water Bill/per 10 litre	0.35	0.03	0.03	0.35	0.03	0.35
	<u>APPLIANCES</u>							
1730	Freezer	Freezer	1.12	750.00	1016.25	1.52	1016.25	1.52
1740	Refridgerator	Refridgerator	0.73	1635.00	1527.50	0.68	1527.50	0.68
1750	Television	Television/brand/15 inch	0.71	369.50	448.67	0.86	448.67	0.86
1760	Washing machine	Washing machine/brand/5kg capacity	0.68	1195.00	993.17	0.57	993.17	0.57
	<u>FURNITURE</u>							
1770	Light fitting	Light fitting/brand/60watt globe	0.28	2.50	1.94	0.22	1.94	0.22
1780	Beds	Beds/single/foam-sponge	0.25	400.00	425.00	0.27	425.00	0.27
	<u>SUPPLIES</u>							
1790	Toilet paper	Toilet Paper/brand/1000 sheets	1.23	2.15	2.43	1.39	2.25	1.29
1800	Washing soap powder	Washing soap powder/brand/500g	0.71	5.60	4.50	0.57	4.67	0.59
1810	Mosquito coil	Mosquito coil/1packet/10coils/120g	0.69	1.14	1.18	0.72	1.23	0.75
1820	Dishwashing liquid	Dishwashing liquid/brand/500ml	0.30	3.48	3.30	0.28	3.37	0.29
1830	Batteries	Batteries/brand/1pack/2 x size D	0.17	2.52	5.53	0.37	5.53	0.37
	<b>Sub total :</b>	<b>(Household Operations group)</b>	<b>8.82</b>			<b>8.33</b>		<b>8.28</b>

REF-NO	ITEM NAME	DESCRIPTION	WEIGHT	01 AUG '08 BASE PRICE	JAN '10 PRICE	INDEX	JAN '11 PRICE	INDEX
	<u>TRANSPORT &amp; COMMUNICATIONS</u>							
1910	Petrol	Petrol/1 litre	5.34	2.00	1.54	4.10	1.54	4.10
1920	Airfair	Return ticket/Australia	2.88	1468.00	998.00	1.96	998.00	1.96
1930	Oil	Oil/brand/multi-grade/1litre	0.48	14.37	9.22	0.31	9.22	0.31
1940	Deisel	Diesel/1 litre	0.43	2.05	1.54	0.32	1.54	0.32
1950	Departure tax	Departure Tax	0.22	50.00	50.00	0.22	50.00	0.22
1960	Other communication	International call card to Australia/rate per hour	0.12	6.00	6.00	0.12	6.00	0.12
	<b>Sub total :</b>	<b>(Transport &amp; Communication group)</b>	<b>9.47</b>			<b>7.03</b>		<b>7.03</b>
	<u>HEALTH</u>							
2010	Hospital charges	Hospital charges/Minor surgery	0.35	20.00	20.00	0.35	20.00	0.35
2020	Doctors/dentists fees	Doctors/dentist/Consultation fees	0.33	10.00	10.00	0.33	10.00	0.33
	<u>EDUCATION</u>							
2030	School clothing	School clothing/Shirts/shorts	0.34	10.00	10.00	0.34	10.00	0.34
2040	Books & schooling supplies	Exercise Books/brand/64pages	0.16	0.85	1.00	0.19	1.00	0.19
	<u>RECREATION</u>							
2050	Records, Cassettes,CD's	Blank CDR/brand/single/700mb	0.64	1.25	1.20	0.61	1.20	0.61
2060	Fishing equipment and supplies	Fishing hook//brand/Nickel coated/size 7/0	0.34	0.20	0.50	0.85	0.50	0.85
2070	DVD hire	DVD hire	0.16	2.00	2.00	0.16	2.00	0.16
	<u>PERSONAL PRODUCTS</u>							
2080	Bathing soap (liquid/bar )	Soap/bar/brand/100g	0.60	0.89	0.93	0.63	0.87	0.58
2090	Toothpaste	Toothpaste/brand/90g	0.17	2.63	2.40	0.16	2.40	0.16
2100	Deodorant, body spray	Deodorant/brand/body spray/100ml	0.13	3.90	4.70	0.16	4.95	0.17
	<u>MISCELANEOUS</u>							
2110	Overseas, Newspaper, Jounals	Magazine/PIM	0.36	4.95	5.00	0.36	5.00	0.36
2120	Dog food	Dog food/canned/700g	0.30	1.95	2.05	0.32	2.30	0.35
	<b>Sub total :</b>	<b>(Miscellaneous group)</b>	<b>3.88</b>			<b>4.45</b>		<b>4.45</b>
	<b>GRAND TOTAL:</b>	<b>(all groups)</b>	<b>100.00</b>			<b>101.49</b>		<b>100.69</b>

SUMMARY SHEET

GROUP	JAN '10 INDEX	JAN '11 INDEX	DIFFERENCE	% INCREASE (+) DECREASE (-)
FOOD	57.43	58.05	0.62	1.08
ALCOHOL & TOBACCO	17.61	16.67	-0.94	-5.35
CLOTHING	3.66	3.39	-0.27	-7.44
HOUSING	2.99	2.82	-0.16	-5.48
HOUSEHOLD OPERATIONS	8.33	8.28	-0.05	-0.57
TRANSPORT & COMMUNICATION	7.03	7.03	0.00	0.00
MISCELLANEOUS	4.45	4.45	0.00	0.04
<b>TOTAL</b>	<b>101.49</b>	<b>100.69</b>	<b>-0.81</b>	<b>-0.79</b>